

INTERNATIONAL EMEA VERSION

POLARIS® SPORTSMAN®

2020

ACCESSORIES + APPAREL



FOREVER OUTDOORS



Sportsman is legendary, giving you the ability to ride harder, go further and do more than any other ATV. From the farm yards to the scenic trails, the Polaris Sportsman line-up is chosen by more ATV owners than any other in the industry.

2020 LINEUP

NEW FOR MODEL YEAR 2020 P. 2

SPORTSMAN XP 1000 S AND SCRAMBLER XP 1000 S: P. 3

570 / 450 P. 12

RECREATION & UTILITY



SPORTSMAN 450 H.O.
(EPS)



SPORTSMAN 570
(EPS/EBS)



SPORTSMAN TOURING 570
(EPS/EBS)



SPORTSMAN 570
HUNTER EDITION

TOURING

HUNT

XP 1000 S / XP 1000 / 850 P. 20

RECREATION & UTILITY



SPORTSMAN 850



SPORTSMAN XP 1000



SPORTSMAN XP 1000 S

TOURING

HUNT

MUD



SPORTSMAN
TOURING 850 / XP 1000



SPORTSMAN XP 1000
HUNTER EDITION



SPORTSMAN 850 / XP 1000
HIGH LIFTER EDITION

SCRAMBLER XP 1000 S / 850 P. 28

SPORT PERFORMANCE



SCRAMBLER 850



SCRAMBLER XP 1000 S

ACE 150 YOUTH P. 29



POLARIS ACE 150 EFI

CONTENTS

NEW FOR MODEL YEAR 2020 2

WINCHES 10

570 / 450 12

WINCHES, PROTECTION & RACKS 14

COMFORT & STORAGE 16

WINDSHIELDS 18

XP 1000 S / XP 1000 / 850 20

WINCHES, RACKS & PROTECTION 22

STORAGE & WINDSHIELDS 24

COMFORT 26

SCRAMBLER XP 1000 S / 850 28

ACE 150 YOUTH 29

COMMON ACCESSORIES 30

WHEELS & TIRES 30

TRACKS 36

GLACIER® PLOW SYSTEMS 38

LIGHTING 40

HUNT 42

POLARIS NORTHSTAR COOLERS 44

PARTS & GARAGE 46

OIL & LUBRICANTS 46

MAINTENANCE 48

HO PARTS 52

SERVICE PARTS 54

BATTERY & LIFTS 56

GARAGE & TRAILERING 58

APPAREL & HELMETS 60

OUTERWEAR & PROTECTION 60

LIFESTYLE APPAREL & CAPS 66

CAMO & GIFTS 68

NEW FOR MODEL YEAR 2020

INTRODUCING THE BIGGEST, BADDEST ATV

TRAIL

MOST POPULAR ADD-ONS

Protection	P. 23
Storage	P. 24
Windshield	P. 25
Wheels & Tires	P. 30



SPORTSMAN XP 1000 S

MOST POPULAR ADD-ONS

Protection	P. 23
Storage	P. 24
Windshield	P. 25
Wheels & Tires	P. 30



UTILITY

MOST POPULAR ADD-ONS

Winch	P. 14
Storage	P. 17
Windshield	P. 18
Wheels & Tires	P. 30

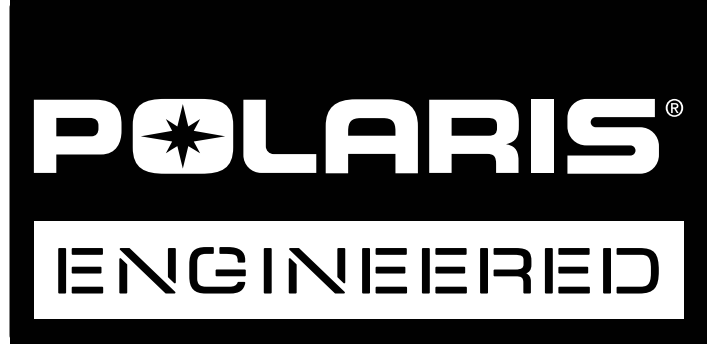


SCRAMBLER XP 1000 S

MOST POPULAR ADD-ONS

Front Brushguard NEW	P. 28
Winch NEW	P. 28
Storage	P. 28
Wheels & Tires	P. 30





KEEP YOUR
STANDARDS
HIGH. WE DO.

DESIGNED



Designed by the same people
who designed your vehicle.

TESTED



Extensively tested in the field so
you ride with 100% confidence.

TRUSTED



65 years in the business.
The #1 name in Off-Road.

**WE HOLD OUR
PARTNERS TO THE
SAME STANDARDS**

PRO ARMOR 

WHEELS, TIRES & LIGHTING DESIGNED WITH
POLARIS TO MAXIMIZE PERFORMANCE

RIGID

PRODUCTS SO GOOD THEY REPLACE
OR REPAIR THEM FOR LIFE

KOLPIN
OUTDOORS

MAKING PRODUCTS FOR AVID
SPORTSMEN SINCE 1943

ENGINEERED

FOR MORE

Ensuring Polaris Engineered Accessories fit and work in sync with your machine is the most critical phase of testing and validation. With seamless integration, you can trust that any Polaris accessory you install will enhance your interaction beyond your expectations.

LOCK & RIDE

CARGO VERSATILITY

Lock & Ride mounting locations allow for limitless customization to let you work the way you want.

P. 17, 24



PRO

PRO HEAVY DUTY SERIES

WINCHES

INTEGRATED WINCH MOUNT & PRE-WIRED

Designated mounting points and pre-wired contactors ensure a perfect fit and the strongest place to attach the Polaris Engineered winch - the most dependable winch for your Sportsman. With wiring built right into the vehicle, we made this the easiest Sportsman winch ever made to install.

P. 10

GLACIER

PLOW SYSTEM

INTEGRATED PLOW MOUNT

The attachment points for the best-in-class Glacier® Plow System are integrated right at the factory and feature an innovative drive-up and go installation process.

P. 38

SUPERIOR INTEGRATION

Right from the factory, your vehicle is built to make essential accessories like winches and plows easy to use day-in and day-out. Mounting brackets are designed into the oversized factory bumper and wiring is routed securely and properly. When it comes to Sportsman, Polaris Engineered Accessories make work easier so you can get more done.

POLARIS
ENGINEERED

PRO PRO HEAVY DUTY SERIES

HID HEAVY DUTY SERIES



WINCHES

PLOWS

WINCHES P. 10

POLARIS WINCH FEATURES



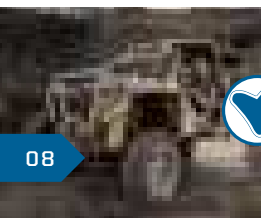
✓ Tested **1,200+** pulls at max load, it works when you need it to



✓ Built to withstand **-29°C** temperatures



✓ Sealed motor & heavy duty gears **OPERATE FULLY SUBMERGED UNDERWATER**



✓ **MILITARY** tested & approved

PRE-WIRED CHASSIS

Factory-installed wiring makes the controls simple to install. Mount the winch, connect the wires and trust that everything is routed safely, securely, and properly.

NO NEED TO CUT PANELS

FULLY INTEGRATED MOUNT & WIRING



GLACIER
PLOW SYSTEM

P. 38



GLACIER® FEATURES

- ✓ Easily engage and disengage the plow system from your Polaris Sportsman.
- ✓ No loss of factory ground clearance when not plowing.
- ✓ Don't have to crawl under the machine to release the plow blade from the vehicle.
- ✓ No trimming of vehicle plastic or fascia required to mount plow or winch.



WINCHES

ADD A PLOW
P. 38

WHETHER HARD AT WORK OR ON THE TRAILS, ADD A WINCH TO...

- GET THE JOB DONE RIGHT
- GET YOU ON YOUR WAY FASTER
- BE PREPARED FOR UNEXPECTED SITUATIONS

WHY POLARIS?



TESTED **1,200+**
PULLS AT MAX LOAD



BUILT TO WITHSTAND
-29° C TEMPERATURES



OPERATES FULLY
SUBMERGED



MILITARY
TESTED & APPROVED

REPLACEMENT PART



REPLACEMENT STEEL CABLE

1588 kg WINCH SERIES
» 2879919



RECOVERY STRAP

- 5cm x 9.1 m (8165 kg)
 - Comes with carry bag
- » 2884033

FEATURES

ALL POLARIS ENGINEERED WINCHES COME WITH:

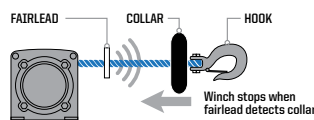
INDUSTRY 1ST TECHNOLOGY

RAPID ROPE RECOVERY



1. Set Dial to FREE SPOOL (N) to attach Winch Hook
2. Set Dial to PULL (L) for Winch Mode
3. Set Dial to ROPE RECOVERY (H) for 5x Faster Rope Recovery

AUTO STOP TECHNOLOGY



Stops winch at end of pull to prevent driveline stress and plow overlifting

PREMIUM SYNTHETIC ROPE

- Lightweight & Easy to Handle
- Superior Flexibility & Strength
- 15 m long

WIRELESS REMOTE



15 m range wireless remote control with unique code for interference-free operation

MODEL

450 H.O. '16-20
570 '14-20
570 SP '15-19
X2 570 '15-20
TOURING 570 '14-20
TOURING 570 SP '15-19
6X6 570 '17-20

850 '12-20
XP 1000/850 HIGH LIFTER '16-20
XP 1000 '15-20
TOURING XP 1000 '15-20
TOURING 850 SP '15-19
TOURING 850 '20
SCRAMBLER 850 '14-20

XP 1000 S '20
SCRAMBLER XP 1000 S '20

PRO PRO HEAVY DUTY SERIES TOP-OF-THE-LINE FEATURES



PRO PRO HEAVY DUTY SERIES

I-HID HEAVY DUTY SERIES BUILT FOR THE OFF-ROAD



I-HID HEAVY DUTY SERIES

- ✓ INTEGRATED WIRING, MOUNT, PREASSEMBLED
- ✓ HOOK WITH STRAP
- ✓ CUT STEEL GEARS & SEALED DRIVETRAIN
- ✓ SEALED PERMANENT MAGNET MOTOR



WITH ALUMINUM FAIRLEAD



NOT AVAILABLE

ADD AUTO STOP TECHNOLOGY WINCH UPGRADE

2881693

SYNTHETIC ROPE REQUIRED



WITH STEEL ROLLER FAIRLEAD



ADD SYNTHETIC ROPE

2878888



ADD WIRELESS WINCH REMOTE

2879316



1588 kg

2882242

2882241

NEW
2883580

1588 kg
with Synthetic Rope

TOP SELLER
2880434

TOP SELLER
2880435

1134 kg
with Steel Cable

TOP SELLER
2880432

2880433

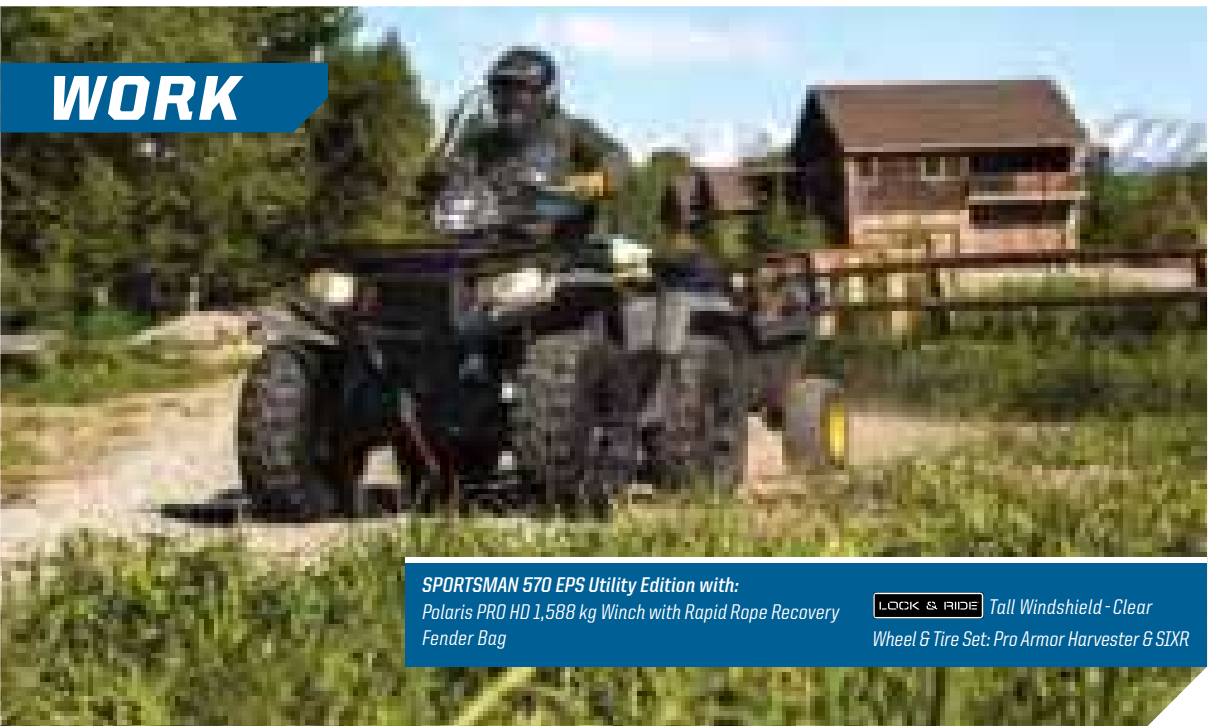
TRAIL



SPORTSMAN 570 with:
Polaris HD 1,588 kg Winch
Front Brushguard

LOOK & RIDE Low Windshield
RIGID® D-Series LED Lights

WORK



SPORTSMAN 570 EPS Utility Edition with:
Polaris PRO HD 1,588 kg Winch with Rapid Rope Recovery
Fender Bag

LOOK & RIDE Tall Windshield - Clear
Wheel & Tire Set: Pro Armor Harvester & SIXR

570 • 450
SPORTSMAN

MAKE IT YOURS

WORK HARD AND GET IT DONE with Polaris Engineered Accessories for your Sportsman. Start with the ultimate in ATV performance and comfort, then add in lighting, wheels, tires, a winch, Glacier® plows and more. Find everything you need to outfit your trusted partner for the task at hand.

HUNT



SPORTSMAN 570 with:
Polaris HD 1,588 kg Winch
Steel Front Brushguard

Rear Rack Extender
Kolpin Stronghold® Auto-Latch Mount

PLOW



SPORTSMAN 570 SP with:
Polaris PRO HD 1,588 kg Winch
Front Brushguard

Rear Rack Extender
Poly Plow Blade 168 cm

BUILD
YOUR SPORTSMAN

TRAIL

- ☐ Winches P. 14
- ☐ Protection P. 14
- ☐ Windshields P. 18
- ☐ Lighting P. 40

HUNT

- ☐ Winches P. 14
- ☐ Protection P. 14
- ☐ Storage P. 17
- ☐ Hunt P. 42

WORK

- ☐ Winches P. 14
- ☐ Storage P. 17
- ☐ Windshields P. 18
- ☐ Wheels & Tires P. 30

PLOW

- ☐ Winches P. 14
- ☐ Protection P. 14
- ☐ Storage P. 17
- ☐ Plows P. 38

SPORTSMAN 570 • 450



WINCHES

POLARIS PRO HD 1,588 kg WINCH TOP SELLER

» 2882242

X2 570 '15-20, TOURING 570 SP '15-19, TOURING 570 '14-20, 6X6 570 '17-20, 570 SP '15-19, 570 '14-20, 450 H.O. '16-20



INDUSTRY 1ST TECHNOLOGY

RAPID ROPE RECOVERY



LEARN MORE ON P. 10

POLARIS HD 1,588 kg WINCH TOP SELLER

» 2880434

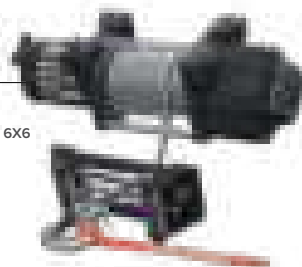
X2 570 '15-20, TOURING 570 SP '15-19, TOURING 570 '14-20, 6X6 570 '17-20, 570 SP '15-19, 570 '14-20, 450 H.O. '16-20



POLARIS HD 1,134 kg WINCH TOP SELLER

» 2880432

X2 570 '15-20, TOURING 570 SP '15-19, TOURING 570 '14-20, 6X6 570 '17-20, 570 SP '15-19, 570 '14-20, 450 H.O. '16-20



NEED A PLOW? SEE P. 38

PROTECTION

TOP SELLER

BRUSHGUARD

- Durable black powdercoating for long-lasting, scratch-resistant finish
- Integrated mounting location for easy installation and accessory lighting



FRONT BRUSHGUARD

» 2879714

X2 570 '15-20, TOURING 570 SP '15-19, TOURING 570 '14-20, 6X6 570 '17-20, 570 SP '15-19, 570 '14-20, 450 H.O. '16-20



REAR BRUSHGUARD

» 2879715

TOURING 570 SP '15-19, TOURING 570 '14-20, 570 SP '15-19, 570 '14-20, 450 H.O. '16-20



FARM & RANCH FRONT BUMPER

- Includes front receiver for additional functionality

» 2882301

X2 570 '15-20, TOURING 570 '14-20, 6X6 570 '17-20, 570 '14-20, 450 H.O. '19-20

RACKS

TOP SELLER

ULTIMATE SERIES – RACK EXTENDER 10.2 cm

FRONT

» 2879716

X2 570 '15-20, TOURING 570 SP '15-19, TOURING 570 '14-20, 6X6 570 '17-20, 570 SP '15-19, 570 '14-20, 450 H.O. '16-20



REAR

» 2879717

570 SP '15-19, 570 '14-20, 450 H.O. '16-20



TOUGH RACK



FRONT

» 2882321

X2 570 '15-20, TOURING 570 '14-20, 6X6 570 '17-20, 570 SP '15-19, 570 '14-20, 450 H.O. '16-20



REAR

» 2882322

570 SP '15-19, 570 '14-20, 450 H.O. '16-20

LOCK & RIDE

YUKON ADVENTURE RACK

- Adds increased storage volume by allowing you to increase storage height securely

» 2882084

6X6 570 '17-20



SPORTSMAN 570 • 450

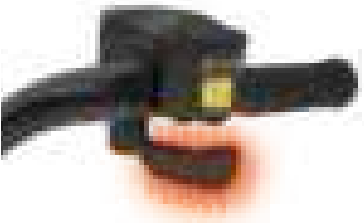


COMFORT



HAND WARMERS TOP SELLER

» 2877363
ALL SPORTSMAN MODELS



THROTTLE/THUMB WARMER

» 2877364
ALL SPORTSMAN MODELS

WATERPROOF BLUETOOTH® SPEAKER BY MB QUART®

- Kit includes four mounting configurations
- Mounts easily to the handlebars or roll cage or fits in your dashboard storage area
- IPX4-rated for water and dust resistance
- Internal LiPo rechargeable battery provides 12 hours of music between charges

» 2880458
ALL SPORTSMAN MODELS EXCEPT YOUTH



HANDGUARDS

COLORS		
<input type="checkbox"/>	BRIGHT WHITE	2876883
<input checked="" type="checkbox"/>	BLACK	2876846
<input type="checkbox"/>	INDY RED	2876845

- Handguard Mount (2879380) is required when installing Polaris Handguards
- Does not fit with windshield fairing or handlebar-mounted mirrors

» 2879380 • MOUNT
ALL SPORTSMAN MODELS EXCEPT YOUTH



HANDLEBAR MOUNTED MIRRORS TOP SELLER

- For added safety on or off the trail
- Sold as a pair
- Does not fit with windshield fairing or handguards

» 2877222
ALL SPORTSMAN MODELS EXCEPT YOUTH

LOOK & RIDE BACKREST

» 2879887
570 SP '15-19, 570 '14-20, 450 H.O. '16-20
Does not fit with K-Cargo Box, Rear,
Lock & Ride (2882882)



STORAGE

LOCK & RIDE REAR CARGO BOX

- Increase your ATV storage with an extra 95 liters of capacity
 - Store two full-size helmets
- » 2882882
XP 1000 S '20, XP 1000 '17-20, 850 '17-20,
850 SP '17-20, 570 SP '15-19, 570 '14-20,
450 H.O. '16-20
Cargo Box will not fit when Utility Rack is installed



FENDER BAG

- Ideal for holding items you want to keep close at hand such as glasses, gloves, or water bottles
- Easy to access contents while seated

» 2876604
ALL SPORTSMAN MODELS EXCEPT YOUTH



SEMI-RIGID TOURING CARGO BAG – BLACK

- Large-capacity, heavy-duty vinyl bag
- Three zippered openings, removable dividers
- Attaches to rack with Velcro® straps

» 2877220
TOURING 570 '14-20



SPORTSMAN 570 • 450



WINDSHIELDS



Tall 48.9 cm Clear

Mid 39.4 cm Black

Mid 39.4 cm Smoke

Low 24.1 cm Black

LOCK & RIDE SPORTSMAN WINDSHIELDS

- Windshield installs on the ATV in seconds without tools with its Lock & Ride technology. It can also be removed in seconds without tools
- Lock & Ride mounts allow a rider to adjust the height and angle of the windshield
- Poly windshields are flexible, impact-resistant, and provide long-term value over the life of your machine
- Three heights available for whatever coverage you prefer
- Does not work with handguards

TOP SELLER

SIZE	COLOR	PART #
TALL 48.9 cm	CLEAR	2880539-409
MID 39.4 cm	BLACK	2880540-070
MID 39.4 cm	SMOKE	2880540-412
LOW 24.1 cm	BLACK	2880541-070

TOURING 570 '18-20, TOURING 570 SP '19, X2 570 '18-20, 570 SP '15-19, 570 '18-20, 450 H.O. '18-20

DO MORE

LIGHTING SEE P. 40



HUNT SEE P. 42



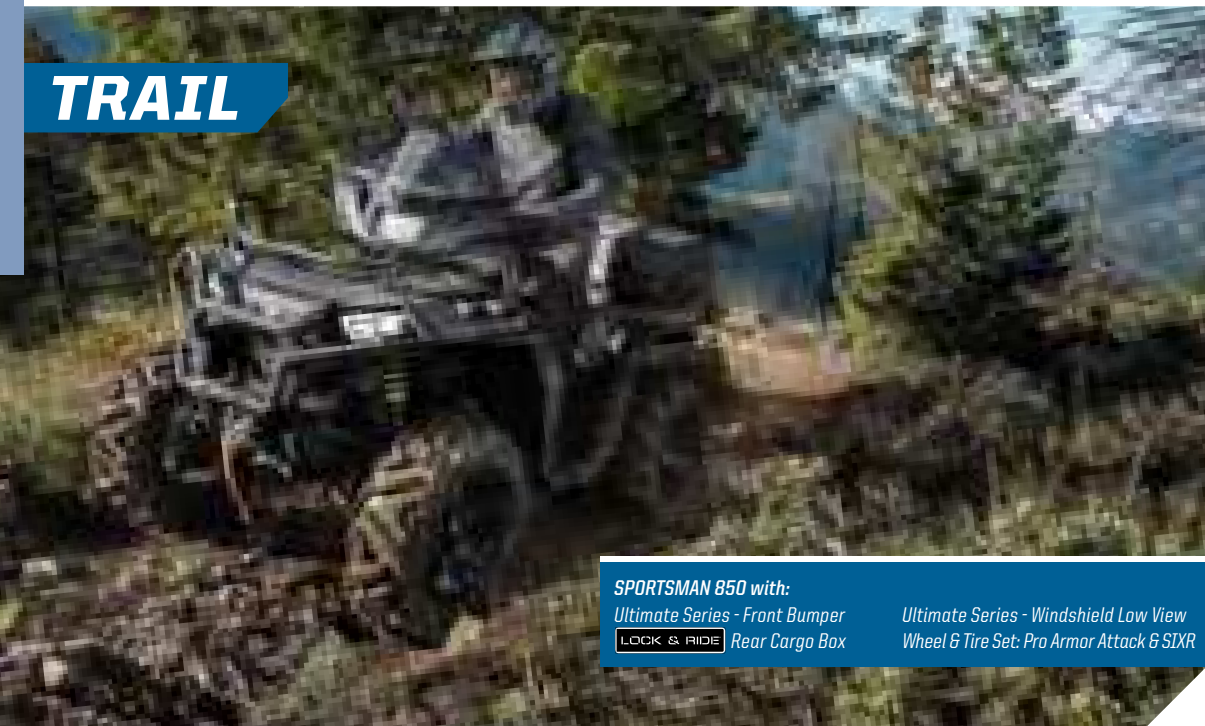
PLOWS SEE P. 38



WHEELS & TIRES SEE P. 30



TRAIL



SPORTSMAN 850 with:
Ultimate Series - Front Bumper
LOCK & RIDE Rear Cargo Box
Ultimate Series - Windshield Low View
Wheel & Tire Set: Pro Armor Attack & SIXR

WORK



SPORTSMAN 850 with:
Polaris HD 1,134 kg Winch
Ultimate Series - Steel Rack
Ultimate Series - Body Armor
Ultimate Series - Windshield Kit - Tall View

HUNT



SPORTSMAN XP 1000 with:
Polaris HD 1,588 kg Winch
Ultimate Series - Front Rack Extender
Ultimate Series - Front Bumper
Kolpin® Gun Boot

PLOW



SPORTSMAN XP 1000 with:
Polaris PRO HD 1,588 kg Winch
Ultimate Series - Rack Extenders
Wheel & Tire Set: Pro Armor Harvester
Glacier® Pro HD Plow System

BUILD YOUR SPORTSMAN

TRAIL

- ☐ Protection P. 23
- ☐ Storage P. 24
- ☐ Windshields P. 25
- ☐ Wheels & Tires P. 30

HUNT

- ☐ Winches P. 22
- ☐ Rack Extenders P. 22
- ☐ Protection P. 23
- ☐ Hunt P. 42

WORK

- ☐ Winches P. 22
- ☐ Protection P. 23
- ☐ Storage P. 24
- ☐ Windshields P. 25

PLOW

- ☐ Winches P. 22
- ☐ Rack Extenders P. 22
- ☐ Wheels & Tires P. 30
- ☐ Plows P. 38

MAKE IT YOURS

WORK HARD AND GET IT DONE with Polaris Engineered Accessories for your Sportsman. Start with the ultimate in ATV performance and comfort, then add in lighting, wheels, tires, a winch, Glacier® plows and more. Find everything you need to outfit your trusted partner for the task at hand.

SPORTSMAN XP 1000 S XP 1000 850



WINCHES

POLARIS PRO HD 1,588 kg WINCH

- » 2883580 **NEW**
XP 1000 S '20, SCRAMBLER XP 1000 S '20
- » 2882241 **TOP SELLER**
XP 1000/850 HIGH LIFTER '16-20, XP 1000 '15-20, TOURING XP 1000 '15-20, TOURING 850 SP '15-19, TOURING 850 '20, SCRAMBLER 850 '14-20, SCRAMBLER XP 1000 '14-18, 850 '12-20, 850 SP '15-19



INDUSTRY 1ST TECHNOLOGY

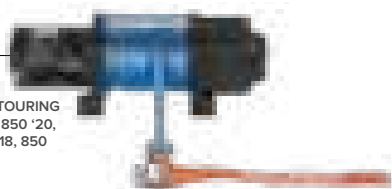
RAPID ROPE RECOVERY



LEARN MORE ON P. 10

POLARIS HD 1,588 kg WINCH **TOP SELLER**

- » 2880435
XP 1000/850 HIGH LIFTER '16-20, XP 1000 '15-20, TOURING XP 1000 '15-20, TOURING 850 SP '15-19, TOURING 850 '20, SCRAMBLER 850 '14-20, SCRAMBLER XP 1000 '14-18, 850 '12-20, 850 SP '15-19



POLARIS HD 1,134 kg WINCH **TOP SELLER**

- » 2880433
XP 1000/850 HIGH LIFTER '16-20, XP 1000 '15-20, TOURING XP 1000 '15-20, TOURING 850 SP '15-19, TOURING 850 '20, SCRAMBLER 850 '14-20, SCRAMBLER XP 1000 '14-18, 850 '12-20, 850 SP '15-19



NEED A PLOW? SEE P. 38

RACKS

ULTIMATE SERIES – RACK EXTENDER 10.2 cm

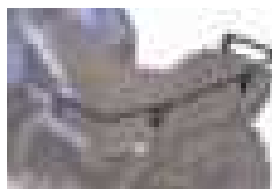
FRONT

- » 2882022
XP 1000 S '20, XP 1000 '17-20, 850 '17-20, 850 SP '17-19



REAR

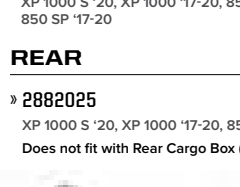
- » 2882023
XP 1000 S '20, XP 1000 '17-20, 850 '17-20, 850 SP '17-19
Fits with Rear Cargo Box (2882882)



ULTIMATE SERIES – RACK EXTENDER 17.8 cm

FRONT

- » 2882024
XP 1000 S '20, XP 1000 '17-20, 850 '17-20, 850 SP '17-20



REAR

- » 2882025
XP 1000 S '20, XP 1000 '17-20, 850 '17-20
Does not fit with Rear Cargo Box (2882882)



FRONT RACK EXTENDER

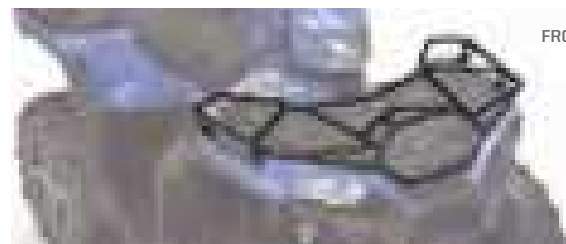
- » 2879890
TOURING XP 1000 '15-20, TOURING 850 '20, TOURING 850 SP '15-19



ULTIMATE SERIES – STEEL RACK

FRONT

- » 2883257
XP 1000 S '20, XP 1000 '17-20, 850 '17-20, 850 SP '17-19



FRONT

REAR

- » 2883258
XP 1000 S '20, XP 1000 '17-20, 850 '17-20, 850 SP '17-19



REAR

ULTIMATE SERIES – MOVEABLE TIE-DOWN POINTS

- » 2882270
(FRONT & REAR - SOLD IN PAIRS)
XP 1000 '17-20, 850 '17-20, 850 SP '17-19



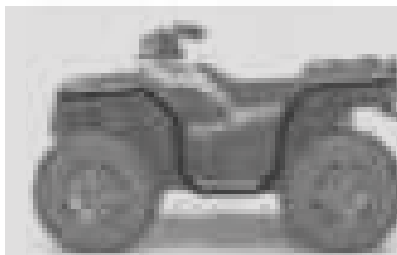
PROTECTION



SPORTSMAN ULTIMATE SERIES – BUMPER **TOP SELLER**

- Quick installation to the integrated mounting tubes on the vehicle using wedge-style expansion anchor mounts
- Attach the Body Armor to the front bumper to provide the ultimate protection for the front fenders

- » 2882020 • FRONT
XP 1000 S '20, XP 1000 '17-20, 850 '17-20, 850 SP '17-19
- » 2882583 • REAR
XP 1000 '17-20, 850 '17-20, 850 SP '17-19



SPORTSMAN ULTIMATE SERIES – BODY ARMOR

- Securely mounts to Ultimate Series Sportsman XP Front Bumper (2882020)
- Comes as pair

- » 2882090
XP 1000 '17-20, 850 '17-20, 850 SP '17-19



SPORTSMAN TOURING XP BRUSHGUARD

- Adds heavy-duty protection and a custom look

- » 2878709
TOURING XP 1000 '15-20, TOURING 850 '20, TOURING 850 SP '15-19
- » 2878324 • REAR
TOURING XP 1000 '15-20, TOURING 850 '20, TOURING 850 SP '15-19

SPORTSMAN XP 1000 S XP 1000 850



STORAGE



LOCK & RIDE REAR CARGO BOX TOP SELLER

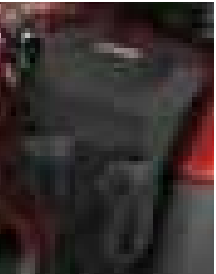
- Increase your ATV storage with an extra 95 liters of capacity
- Store two full-size helmets

» 2882882
XP 1000 S '20, XP 1000 '17-20, 850 '17-20, 850 SP '17-19, 570 SP '15-19, 570 '14-20, 450 H.O. '16-20
Does not fit with utility rack installed

FENDER BAG

- Ideal for holding items you want to keep close at hand such as glasses, gloves, or water bottles
- Easy to access contents while seated

» 2876604
ALL SPORTSMAN MODELS EXCEPT YOUTH



ULTIMATE SERIES – READY PACK

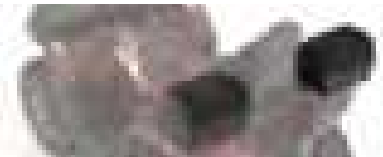
- Keep your trail essentials at the ready with this easy-to-access, weather-resistant storage compartment

» 2882271
XP 1000 '17-20, 850 '17-20, 850 SP '17-19



LOCK & RIDE FRONT CARGO BOX

» 2877951
TOURING XP 1000 '15-20, TOURING 850 '20, TOURING 850 SP '15-19
The Front Rack Extender cannot be installed at the same time as the storage box



LOCK & RIDE REAR STORAGE BOX

» 2878000
TOURING XP 1000 '15-20, TOURING 850 '20, TOURING 850 SP '15-19
Slight interference with Sportsman Touring 550/850 '11-14 passenger handles

WINDSHIELDS

ULTIMATE SERIES – WINDSHIELDS

Fairing required to add your preferred windshield or storage bag.

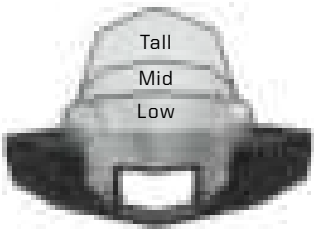
WINDSHIELD FAIRING

- Customizable system based on your style and protection needs
- Install just the fairing or add any of the windshields listed to the right
- Does not work with handguards or handlebar mounted mirror

» 2882512
XP 1000 S '20, XP 1000 '17-20, 850 '17-20, 850 SP '17-19

WINDSHIELD FAIRING BAG

» 2882454
XP 1000 S '20, XP 1000 '17-20, 850 '17-20, 850 SP '17-19



TALLVIEW

» 2882152
XP 1000 S '20, XP 1000 '17-20, 850 '17-20, 850 SP '17-19

TALLVIEW HARD COAT

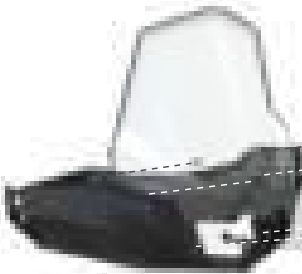
» 2881161
XP 1000 S '20, XP 1000 '17-20, 850 '17-20, 850 SP '17-19

MIDVIEW

» 2882151
XP 1000 S '20, XP 1000 '17-20, 850 '17-20, 850 SP '17-19

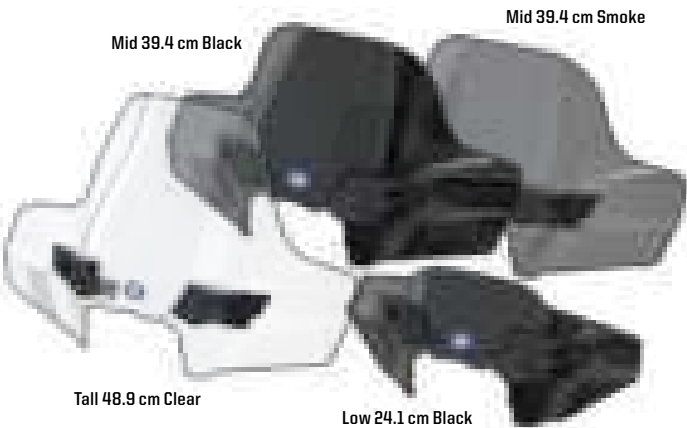
LOWVIEW

» 2882150
XP 1000 S '20, XP 1000 '17-20, 850 '17-20, 850 SP '17-19



EASY TO CHANGE WINDSHIELDS WITH 6-DART INSTALL

Our fairing system allows for changing out the windshield quickly and easily. Simply remove the six dart-type fasteners and swap out the windshield.



LOCK & RIDE SPORTSMAN WINDSHIELDS

- Windshield installs on the ATV in seconds without tools with its Lock & Ride technology. It can also be removed in seconds without tools
- Lock & Ride mounts allow a rider to adjust the height and angle of the windshield
- Poly windshields are flexible, impact-resistant, and provide long-term value over the life of your machine
- Three heights available for whatever coverage you prefer
- Does not work with handguards

SIZE	COLOR	PART #
TALL 48.9 cm	CLEAR	2880539-409
MID 39.4 cm	BLACK	2880540-070
MID 39.4 cm	SMOKE	2880540-412
LOW 24.1 cm	BLACK	2880541-070

TOURING XP 1000 '15-20, TOURING 850 '20, TOURING 850 SP '15-19

SPORTSMAN XP 1000 S XP 1000 850



COMFORT



HAND WARMERS TOP SELLER

» 2877363
ALL SPORTSMAN MODELS



THROTTLE/THUMB WARMERS

» 2877364
ALL SPORTSMAN MODELS

WATERPROOF BLUETOOTH® SPEAKER BY MB QUART®

- Kit includes four mounting configurations
- Mounts easily to the handlebars or roll cage or fits in your dashboard storage area
- IPX4-rated for water and dust resistance
- Internal LiPo rechargeable battery provides 12 hours of music between charges

» 2880458
ALL SPORTSMAN MODELS EXCEPT YOUTH



HANDGUARDS

COLORS		
<input type="checkbox"/>	BRIGHT WHITE	2876883
<input checked="" type="checkbox"/>	BLACK	2876846
<input type="checkbox"/>	INDY RED	2876845

- Handguard Mount (2879380) is required when installing Polaris Handguards
- Does not fit with windshield fairing or handlebar-mounted mirrors

» 2879380 • MOUNT
ALL SPORTSMAN MODELS EXCEPT YOUTH



HANDLEBAR MOUNTED MIRRORS TOP SELLER

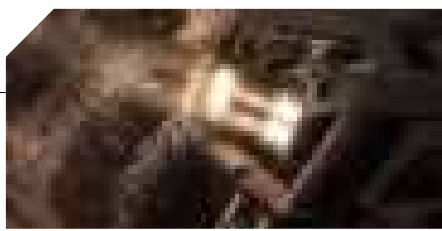
- For added safety on or off the trail
- Sold as a pair
- Does not fit with windshield fairing or handguards

» 2877222
ALL SPORTSMAN MODELS EXCEPT YOUTH

DO MORE

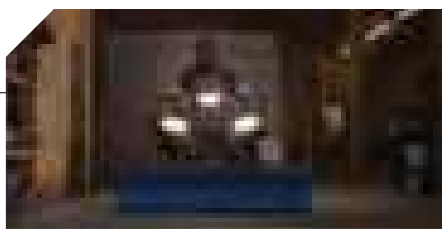
LIGHTING

SEE P. 40



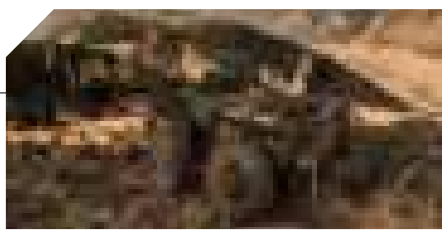
PLOWS

SEE P. 38



HUNT

SEE P. 42



WHEELS & TIRES

SEE P. 30



SCRAMBLER XP 1000 S 850



WINCH



POLARIS PRO HD 1,588 kg WINCH

- » 2883580 **NEW**
SCRAMBLER XP 1000 S '20
- » 2882241 **TOP SELLER**
SCRAMBLER 850 '14-20, SCRAMBLER XP 1000 '14-18



POLARIS **TOP SELLER** HD 1,588 kg WINCH

- » 2880435
SCRAMBLER 850 '14-20, SCRAMBLER XP 1000 '14-18



POLARIS **TOP SELLER** HD 1,134 kg WINCH

- » 2880433
SCRAMBLER 850 '14-20, SCRAMBLER XP 1000 '14-18

RACKS/STORAGE



LARGE REAR RACK

- » 2879139
SCRAMBLER 850 '14-20, SCRAMBLER XP 1000 S '20,
SCRAMBLER XP 1000 '14-18
Not compatible with Ogio® Bag (2879925)



OGIO® BAG

- » 2879925
SCRAMBLER 850 '14-20, SCRAMBLER XP 1000 S '20,
SCRAMBLER XP 1000 '14-18

PROTECTION



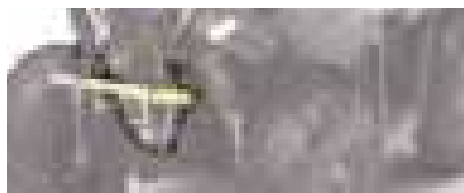
ULTIMATE SPORT SERIES FRONT BRUSHGUARD **NEW**

- » 2883595
SCRAMBLER XP 1000 S '20



FRONT BRUSHGUARD

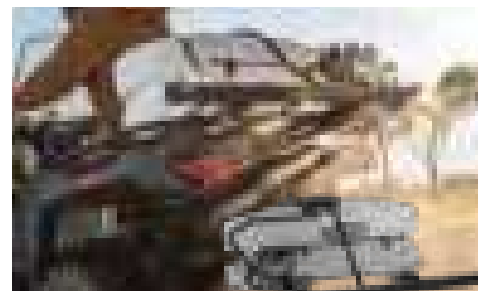
- » 2879136
SCRAMBLER 850 '14-20, SCRAMBLER XP 1000 '14-18
Replaces existing lower bumper. Will not work together



REAR BASH GUARD

- » 2879138
SCRAMBLER 850 '14-20, SCRAMBLER XP 1000 '14-18

MISC SPORTSMAN ACCESSORIES



BOOM SPRAYER

- » 2882266
ALL SPORTSMAN MODELS EXCEPT TOURING



QUICKTAP BATTERY POSTS

- Easy-to-access terminal posts give you quick access to the battery power
- Ideal for charging your battery, powering a temporary accessory, or when you need to offer an unexpected jump-start
- Connection posts feature covers to protect terminals when not in use
- » 2882110
X2 570 '15-20, TOURING 570 '14-20, 6X6 570 '17-20, 570 SP '15-19, 570 '14-20, 450 H.O. '19-20



RIDE & REPAIR ESSENTIALS KIT

- 12-volt DC portable air compressor
- Tire repair kit with 6 plugs
- Basic first-aid kit with bandages, scissors, safety pins, and more
- 12-volt jumper cables
- Duct tape - 300mm x 1 roll
- Zip ties - 150mm length
- Electrical tape
- Ratchet strap - 50mm
- Microfiber cloth
- Carry bag

- » 2881207

FOR TRAILERING AND RECOVERY STRAPS SEE P. 59

POLARIS ACE 150

**THE ONLY SINGLE SEAT
YOUTH ATV WITH A
FULL CAB FRAME**



POLY ROOF

- » 2882263
POLARIS ACE 150 '17-20

HALF POLY WINDSHIELD

- » 2882264
POLARIS ACE 150 '17-20

FRONT & REAR BUMPER SET

- » 2882472
POLARIS ACE 150 '17-20

PRO ARMOR



Each wheel and tire Pro Armor designs for off-road vehicles performs perfectly in the intended environment for its intended use. Developed, tested, and produced in partnership so you can tackle the terrain ahead with Polaris.

TRIPLE-BELTED SIDEWALLS

- Sidewalls are the most vulnerable puncture area of any off-road tire
- Pro Armor makes tires with extra protection exactly where it's needed most – the sidewall

8 OR 10-PLY RATED

- Pro Armor builds the toughest tires
- Higher ply ratings mean added protection

INNOVATION

DUAL DUROMETER LUGS (Crawler XG & Attack 2.0)

- Firm durometer rubber on base of lug for stability
- Soft durometer rubber on top of lug for sticky grip

DUAL COMPOUND TREAD (Dual-Threat)

- Firm durometer rubber on center of tread for long wear life
- Soft durometer rubber on shoulders of tread for superior grip

4,828+ km RATED

Pile on the kilometers with Pro Armor tires. Every tire is designed and constructed with longevity in mind. With ratings of 4,828 kilometers and beyond, you are assured long life and performance.

KNOW YOUR TIRES

DIMENSIONS
28" x 9" R14
TIRE HEIGHT | TIRE WIDTH | WHEEL DIAMETER

TREAD DEPTH
A deeper tread means more grip in all conditions

WEIGHT
A lighter tire makes for improved vehicle performance

PLY RATING
Indicates tire puncture-resistance

SIDEWALL BELTS
Increase your resistance to sidewall punctures

LOAD RATING
Tires with higher load ratings can handle more weight

KNOW YOUR TERRAIN



- Extra deep treads
- Self-cleaning lugs



- Tread patterns optimized for extreme traction
- Ideal for both hard pack and loose trail



- Industry leading anti-puncture side walls
- Purpose-built, long lasting tread patterns



- Handles extreme cold
- Holds shape and provides traction



- Paddles provide traction and durability in soft sand
- Built to float on top of sand



- Flexible "grippy" tread
- Aggressive side bite



- Provides traction and durability
- Built to perform in hard sand, jagged rocks or any other extreme terrain

TRAIL



- Tread patterns optimized for extreme traction
- Ideal for both hard pack and loose trail



PRO ARMOR DUAL-THREAT

- Dual-compound technology and radial construction offer performance in all terrains
- Softer durometer rubber on outer edge for overall superior grip and feel
- Harder durometer rubber in the middle for increase traction during acceleration and longer tread life

14" 26" x 9" R14 • FRONT • 5416340
26" x 11" R14 • REAR • 5416341

		TREAD DEPTH	TIRE WEIGHT	PLY RATING	SIDEWALL BELTS	LOAD RATING
26"	FRONT	16mm	12 kg	10	3	413 kg
	REAR		14 kg			503 kg

WHEEL SIZE

14"



PRO ARMOR ATTACK

- The best all-purpose tire for all-season traction in any terrain
- Unique full-face tread design
- Harder durometer lugs promote extended wear, increasing tire life

14" 26" x 9" R14 • FRONT • 5415613
26" x 11" R14 • REAR • 5415614

		TREAD DEPTH	TIRE WEIGHT	PLY RATING	SIDEWALL BELTS	LOAD RATING
26"	FRONT	23mm	13 kg	8	3	413 kg
	REAR		15 kg			599 kg

WHEEL SIZE

14"

UTILITY



- Industry leading anti-puncture side walls
- Purpose-built, long lasting tread patterns

PRO ARMOR HARVESTER

- All-around workhorse with tread life of 8,047 kilometers
- Tread pattern designed to withstand anything from the farmyard to the pastures to the trail
- With 10-ply, it can carry the load day-in and day-out

14" 27" x 10" R14 • FRONT/REAR • 5415965
12" 26" x 8" R12 • FRONT • 5416396
12" 26" x 10" R12 • REAR • 5415966

		TREAD DEPTH	TIRE WEIGHT	PLY RATING	SIDEWALL BELTS	LOAD RATING
26"	FRONT		11 kg			388 kg
	REAR	16mm	15 kg	10	3	615 kg
27"	FRONT/REAR		15 kg			599 kg

WHEEL SIZE



PRO ARMOR PRESERVE

- Turf-friendly for areas where low impact from tire tread is needed
- Exceptionally quiet-running tire
- Low impact tire

14" 27" x 10" R14 • FRONT/REAR • 5416348
12" 26" x 8" R12 • FRONT • 5416403
12" 26" x 10" R12 • REAR • 5416402

		TREAD DEPTH	TIRE WEIGHT	PLY RATING	SIDEWALL BELTS	LOAD RATING
26"	FRONT		11 kg			388 kg
	REAR	16mm	13 kg	10	3	599 kg
27"	FRONT/REAR		13 kg			599 kg

WHEEL SIZE



PRO ARMOR XD-K

- 26" Aramid fiber-belted tire can tackle any terrain
- Unique full-face tread design
- Harder durometer lugs promotes for extended wear increasing tire life

12" 26" x 9" R12 • FRONT • 5415756
12" 26" x 11" R12 • REAR • 5415757

		TREAD DEPTH	TIRE WEIGHT	PLY RATING	SIDEWALL BELTS	LOAD RATING
26"	FRONT		13 kg		3/1 Aramid	388 kg
	REAR	31.7mm	15 kg	8		499 kg

WHEEL SIZE



SNOW



- Handles extreme cold
- Holds shape and provides traction

PRO ARMOR WHITEOUT

- Extra wide tires for flotation in snow
- Tread pattern designed for superior snow traction with limited digging

14" 27" x 14" R14 • FRONT/REAR • 5416032

		TREAD DEPTH	TIRE WEIGHT	PLY RATING	SIDEWALL BELTS	LOAD RATING
27"	FRONT					
	REAR	16mm	11 kg	8	3	424 kg

WHEEL SIZE



MUD



- Extra deep treads
- Self-cleaning lugs

PRO ARMOR MUD XC

- Designed for the perfect mud-trail crossover for a smooth ride on the trail and aggressive traction in the mud
- Dual-compound technology with harder durometer lugs promote extended wear, increasing tire life
- 10-ply construction, means added protection in the toughest terrain

14" 27" x 9" R14 • FRONT • 5416947
27" x 11" R14 • REAR • 5416948

		TREAD DEPTH	TIRE WEIGHT	PLY RATING	SIDEWALL BELTS	LOAD RATING
27"	FRONT		14 kg			531 kg
	REAR	30mm	15 kg	10	3	599 kg

WHEEL SIZE



WHEELS



A AMPLIFY

FRONT **WEIGHT: 5.9 kg | LOAD RATING: 408 kg | OFFSET: +4**
REAR **WEIGHT: 6.4 kg | LOAD RATING: 590 kg | OFFSET: -9**

ACCENT: FRONT 14" x 7" 1522956-266
REAR 14" x 8" 1522957-266
MATTE BLACK: FRONT 14" x 7" 1522956-458
REAR 14" x 8" 1522957-458

D REBLR (BEADLOCK RINGS SOLD SEPARATELY)

FRONT **WEIGHT: 5.9 kg | LOAD RATING: 408 kg | OFFSET: +4**
REAR **WEIGHT: 6.6 kg | LOAD RATING: 590 kg | OFFSET: -9**

ACCENT: FRONT 14" x 7" 1522238-458
REAR 14" x 8" 1522239-458

G SPLIT

FRONT **WEIGHT: 4.3 kg | LOAD RATING: 408 kg | OFFSET: +4**
REAR **WEIGHT: 4.9 kg | LOAD RATING: 590 kg | OFFSET: -9**

MATTE BLACK: FRONT 14" x 6" 1522542-458
REAR 14" x 8" 1522543-458

B BUCKLE

FRONT **WEIGHT: 5.8 kg | LOAD RATING: 408 kg | OFFSET: +4**
REAR **WEIGHT: 6.1 kg | LOAD RATING: 590 kg | OFFSET: -9**

ACCENT: FRONT 14" x 7" 1522544-266
REAR 14" x 8" 1522545-266
MATTE BLACK: FRONT 14" x 7" 1522544-458
REAR 14" x 8" 1522545-458

E SHACKLE

FRONT **WEIGHT: 5.9 kg | LOAD RATING: 408 kg | OFFSET: +4**
REAR **WEIGHT: 6.4 kg | LOAD RATING: 590 kg | OFFSET: -9**

ACCENT: FRONT 14" x 7" 1522546-266
REAR 14" x 8" 1522547-266
MATTE BLACK: FRONT 14" x 7" 1522546-458
REAR 14" x 8" 1522547-458

H WHITEOUT

FRONT **WEIGHT: 6.6 kg | LOAD RATING: 363 kg | OFFSET: -35**
REAR **WEIGHT: 6.6 kg | LOAD RATING: 363 kg | OFFSET: -35**

MATTE BLACK: FRONT/REAR 14" x 10" 1522958

C COMBAT (BEADLOCK RINGS INCLUDED)

WEIGHT: 7.3 kg | LOAD RATING: 726 kg | OFFSET: +38

ACCENT: FRONT/REAR 14" x 7" 1523284
MATTE BLACK: FRONT/REAR 14" x 7" 1523283

F SIXR

FRONT **WEIGHT: 4.8 kg | LOAD RATING: 408 kg | OFFSET: +4**
REAR **WEIGHT: 5.7 kg | LOAD RATING: 590 kg | OFFSET: -9**

MATTE BLACK: FRONT 14" x 7" 1521507-521
REAR 14" x 8" 1521508-521

LUSTER: FRONT 14" x 7" 1521507-410
REAR 14" x 8" 1521508-410

2 WAYS TO PURCHASE

INDIVIDUAL WHEELS & TIRES
- OR -
COMPLETE SETS AS LISTED

Exclusively at Polaris Authorized Dealers

PRO ARMOR FORGED RINGS Sold Individually
Only used on REBLR

	PART #
A Voodoo Blue	1522244-619
B Machined	1522244-266
C White	1522244-133
D Indy Red	1522244-293
E Orange Crush	1522244-589
F Beadlock Ring - Matte Black - 14"	1523146-458
Only used on Combat	

14" FORGED BEADLOCK RINGS



KNOW YOUR TERRAIN



- Extra deep treads
- Self-cleaning lugs



- Tread patterns optimized for extreme traction
- Ideal for both hard pack and loose trail



- Industry leading anti-puncture side walls
- Purpose-built, long lasting tread patterns



- Handles extreme cold
- Holds shape and provides traction

WHEEL & TIRE SETS



14" WHEELS

TRAIL

ATTACK 26"

DUAL-THREAT 26"

MUD

MUD XC 27"

UTILITY

PRESERVE 27"

HARVESTER 27"

SNOW

WHITEOUT 27"

AMPLIFY Accent	2882390	2883138	2884272	2883208	2882388	
AMPLIFY Matte Black	2882391	2883139	2884273	2883209	2882389	
BUCKLE Accent	2881335	2883140	2884267	2883203	2882383	
BUCKLE Matte Black	2881336	2883141	2884268	2883204	2882384	
COMBAT Accent BEADLOCKS PRE-MOUNTED		2883217				
COMBAT Matte Black BEADLOCKS PRE-MOUNTED		2883216				
REBLR Matte Black BEADLOCKS SOLD SEPARATELY	2881381					
SHACKLE Accent	2881347	2883142	2884270	2883205	2882385	
SHACKLE Matte Black	2881348	2883143	2884271	2883206	2882386	
SIXR Luster	2881359	2883144				
SIXR Matte Black	2881360	2883145	2884269	2883207	2882387	
SPLIT Matte Black	2881404					
WHITEOUT R14 Matte Black						2882382

LUG NUTS

LUG NUTS REQUIRED



METRIC LUG NUTS FOR ALUMINUM RIMS

- » 2877385 - SET OF 4
- » 2877384 - SET OF 16 SPORTSMAN XP

SAE LUG NUTS FOR ALUMINUM RIMS

- » 2876754 - SET OF 4
- » 2877409 - SET OF 16 SPORTSMAN 450/570

REPLACEMENT CAPS

CENTER CAP

LUSTER	ALL WHEELS EXCEPT WYDE & HEXLR	1521509-410
MATTE BLACK		1521509-521

PRO ARMOR CENTER CAP

LUSTER	ALL WHEELS EXCEPT WYDE & HEXLR	5453209-410
MATTE BLACK		5453209-458



COLBY VALVE SHORT
ULTIMATE VALVE - 2 PACK

» 2883292



COLBY VALVE EMERGENCY
VALVE - 2 PACK

» 2883293

ALL-TERRAIN TRACTION

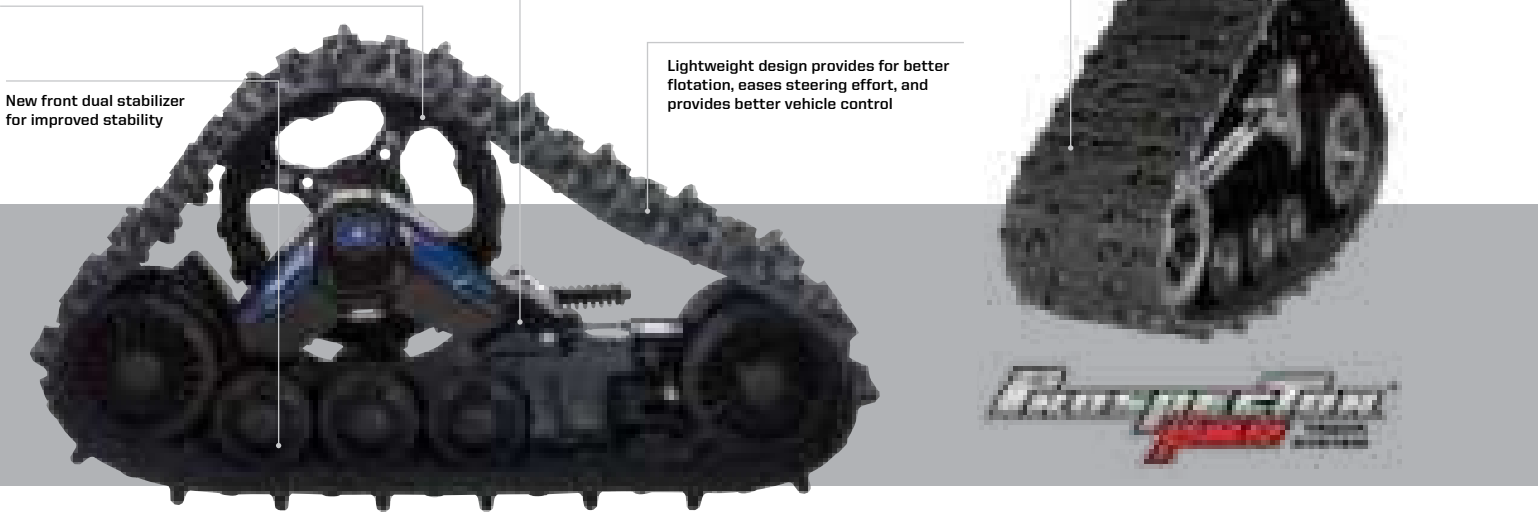
It's tough to make Sportsman even more versatile than it already is. But with a set of Prospector Pro® Tracks, you'll do just that. Tread through deep snow without concern.

- Polaris-specific gearing provides 1:1 ratio to:
- Minimize track slip, providing better climbing ability and improved traction in deep snow
 - Improve top speed over prior models by approximately 5%
 - Reduce operating RPM for a quieter ride
 - Improve driveline durability, which allows vehicle to run at a lower RPM, decreasing engine wear

Polaris exclusive optimized hub geometry that minimizes feedback and eases steering effort

Lightweight design provides for better flotation, eases steering effort, and provides better vehicle control

Flexible lug design provides the highest level of deep snow performance by lifting up in deep snow as opposed to digging down



		STEP 1 SELECT A MOUNT	STEP 2 SELECT A KIT
MODELS	TYPE	MOUNT	KIT
SPORTSMAN 570 EPS '15-20 SPORTSMAN 570 SP '15-19 SPORTSMAN TOURING 570 SP '15-19 SPORTSMAN X2 570 '15-20	EPS	2879497	2881025
SPORTSMAN XP 1000 S '20 SCRAMBLER XP 1000 S '20	EPS	2883977	2881003
SPORTSMAN XP 1000 '17-20 SPORTSMAN 850 SP '18-19	EPS	2882109	2881003
SCRAMBLER 1000 '15-18 SPORTSMAN TOURING XP 1000 '17-20 SPORTSMAN TOURING 850 '20 SPORTSMAN TOURING 850 SP '17-19	EPS	2879457	2881003
SPORTSMAN 570 '14-20 SPORTSMAN TOURING 570 '15-20	NON-EPS	2879497	2880020
SCRAMBLER 850 '13-20 SPORTSMAN 850 '15-20	NON-EPS	2879457	2879720
SPORTSMAN XP 1000 '18-20	NON-EPS	2882109	2879720
570 6X6 '17-20	EPS	2882169 Includes Track Mount & Track Kit	

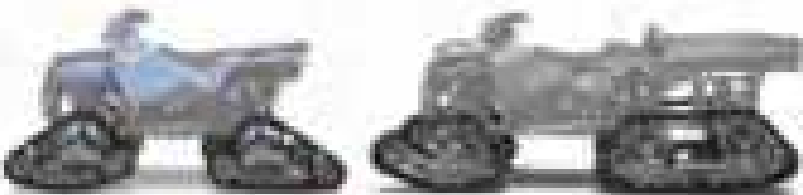
WANT TO PLOW?

GLACIER® PRO PLOW TRACK EXTENSION

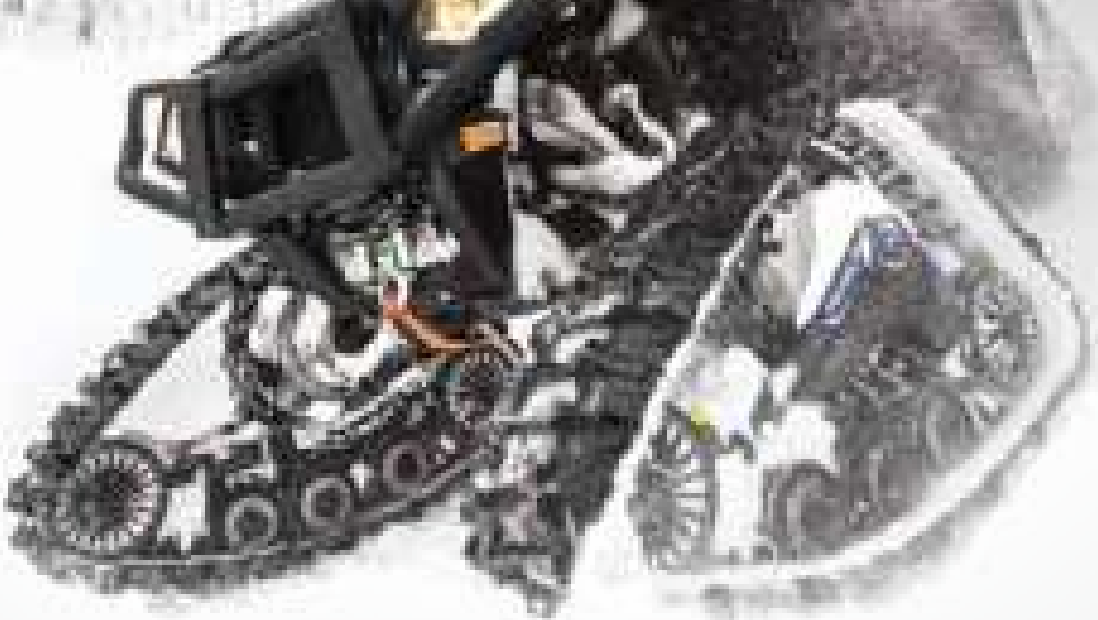
» 2879719

- Plow extension for use when using the Prospector pro track system and Glacier® Pro Sportsman plow system

FOR USE WITH GLACIER® PRO PLOW SYSTEMS



WANT TO PLOW? SEE P. 38



SPORTSMAN® SNOW TRACTION OPTIONS

TREAD THROUGH SNOW WITH THESE OPTIONS	CONTACT PATCH	TURNING RADIUS
 STOCK TIRES	 6000	 354.3 cm
 PRO ARMOR WHITEOUT	 BETTER <small>MORE SURFACE AREA FOR BETTER FLOTATION ON SNOW</small>	 352.743 cm
 PROSPECTOR PRO® TRACKS	 BEST <small>LESS AGGRESSIVE TREAD DISPLACES SNOW FOR BETTER HANDLING</small>	 445.453 cm

GLACIER[®]

PLOW SYSTEM

TAKE COMMAND OF CLEARING SNOW AND MAKE QUICK WORK OF EVEN THE HEAVIEST JOBS.

THE POLARIS ENGINEERED ADVANTAGE

INSTALLATION

30 seconds: Drive up, clip in, lock down, and go – the integrated Polaris Engineered Glacier[®] Plow System simplifies plowing.

CONVENIENCE

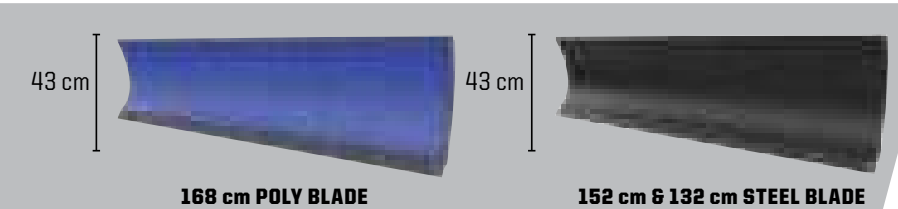
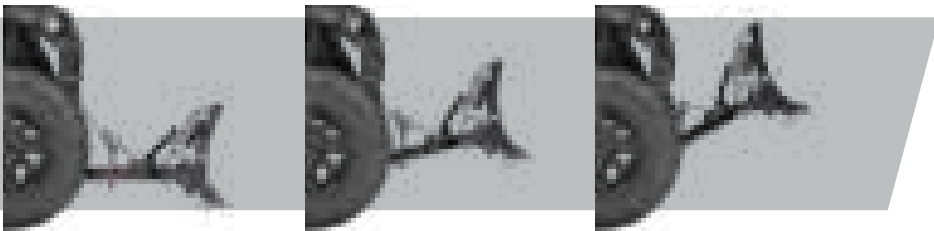
Lift and angle adjustments can be made from the driver's seat.

ROBUST FRAME

A plow system is only as strong as its frame, and Polaris Engineered plow frames have a wide frame to withstand the rigors of heavy plowing.

DURABLE BLADES

Available in strong stamped steel or corrosion-resistant poly materials, Polaris Engineered plow blades cover a large surface area for quick snow removal.

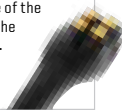


ADD HYDRAULICS



CONTROL FROM THE PALM OF YOUR HAND

Change the angle of the plow blade with the Power Controller.





HYDRAULIC CONTROL FOR EXTREME SNOW REMOVAL

GLACIER[®] PRO HD GIVES YOU

»168 cm, 152 cm or 132 cm Blades

»Choice of poly or steel

»Ability to add a hydraulic angle system

	MANDATORY STEPS				OPTIONAL
	STEP 1 SELECT A MOUNT	STEP 2 SELECT A FRAME	STEP 3 SELECT PLOW CONFIGURATION		STEP 4 ADD HYDRAULICS
MODELS	MOUNT	FRAME	WINCHES	BLADES	HYDRAULICS
XP 1000 '15-20 850 '15-20, 850 SP '15-19 850/XP 1000 HIGHLIFTER '16-20 TOURING XP 1000 '15-20 TOURING 850 SP '15-19 TOURING 850 '20 SCRAMBLER '15-20	2881423	2879630	Polaris PRO HD 1,588 kg Winch 2882241 Polaris HD 1,588 kg Winch 2880435 Polaris HD 1,134 kg Winch 2880433	168 cm Poly 2880269 152 cm Steel 2879638 132 cm Steel 2879639	Hydraulic Plow Blade Angle System 2879635 Power Controller 2880836 Power Controller Recommended
XP 1000 S '20 SCRAMBLER XP 1000 S '20	 2883581		 Polaris PRO HD 1,588 kg Winch 2883580		
570 SP '15-19 570 '15-20 570 6X6 '17-20 X2 570 '15-20 TOURING 570 SP '15-19 TOURING 570 '15-20 450 H.O. '16-20	2881424		Polaris PRO HD 1,588 kg Winch 2882242 Polaris HD 1,588 kg Winch 2880434 Polaris HD 1,134 kg Winch 2880432		

STEP 5

SELECT ACCESSORIES & REPLACEMENT ITEMS

ACCESSORIES & REPLACEMENT ITEMS

168 cm HD Wear Bar 2879868 168 cm Wear Bar 2879867 152 cm Wear Bar 2877243 132 cm Wear Bar 2877210	168 cm Plow Blade Snow Deflector 2879866 Plow Blade Deflector 2871808 Skid Shoe 2205071 Glacier [®] Pro Shear Pin Replacement 2205063	Plow Winch Rope For 1,134 kg & 1,588 kg winches 2878483 Glacier [®] Plow Marker Sold in pairs 2872726 Rear Tire Chains Recommended for rear tires only 2881422 Plow Blade Track Extension Required for track equipped vehicles 2879719
---	---	--

NEED TRACKS? SEE P. 36

COMMON

WINCHES

570-450

XP 1000 S •
XP 1000 • 850

SCRAMBLER
XP 1000 S • 850

MISC & YOUTH

WHEELS & TIRES

TRACKS & PLOW

LIGHTING

HUNT & COOLERS

39

38



POLARIS ENGINEERED™
ADVANTAGES

MOUNTS PERFECTLY
Designed for your Polaris Engineered
bumper, roof or other mounting point

MAX PERFORMANCE
Validated to work as hard as
your machine does

DOESN'T OVERTAX
Trust it to work when you
need it to



ADVANCED
TECH

RIGID® lights are driven by Aluminum PCB Smart Boards™, 6063-T5 aircraft aluminum extruded housings and Tiger Drylac® UV protection polyester powdercoating.

EXCLUSIVE
OPTICS

RIGID® lights feature impact-resistant polycarbonate lenses for a 100% water/dustproof seal.

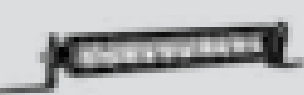
RUGGED
CONSTRUCTION

Pro Armor lights are designed to be big and beefy with an aggressive style all their own, and housed in IP67 marine-grade rated UV polyester powdercoating.

MASSIVELY
BRIGHT

Pro Armor builds bright lights designed for any riding experience. All that power is directed through heat dissipating aluminum for streamlined heat management.

LIGHT BAR TYPES



SR-SERIES PRO

Sleek, powerful, low-profile (under 5 cm tall).
Lights extreme distances with low energy usage.
Available in 25.4 cm



D-SERIES PRO

Compact to fit almost anywhere with
high output and low energy usage.
Available in Driving, Flood & Spot



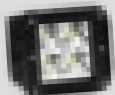
DUAL-ROW LED LIGHT BARS

The most spread and farthest illumination
downrange. Easy to mount.
Available in Cube, 25.4 cm & 50.8 cm



SINGLE-ROW LED LIGHT BARS

Powerful, compact, low-profile light bars with a
sleek look.
Available in 27.9 cm & 50.8 cm

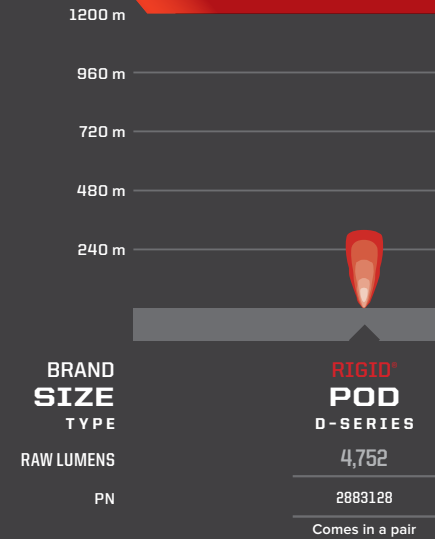


CUBE LED LIGHTS

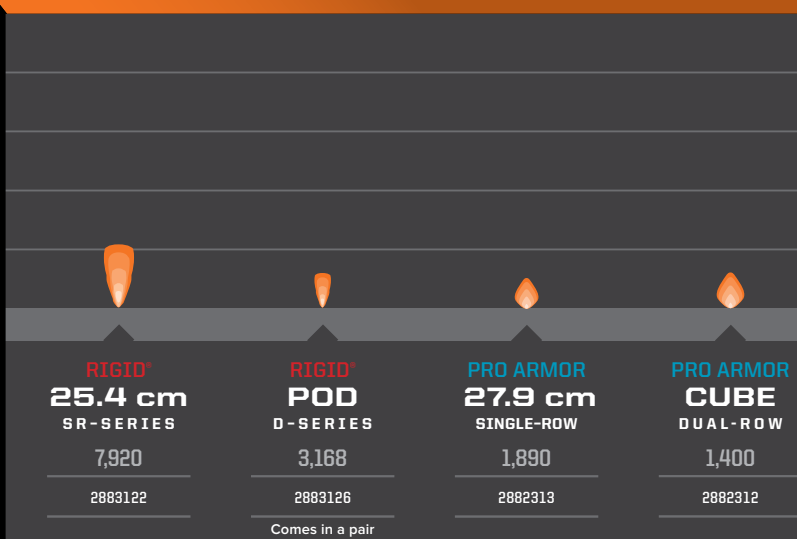
Small size allows mounting in
strategic locations for added lighting.
Available in Flood & Spot

LIGHT BAR OPTIONS

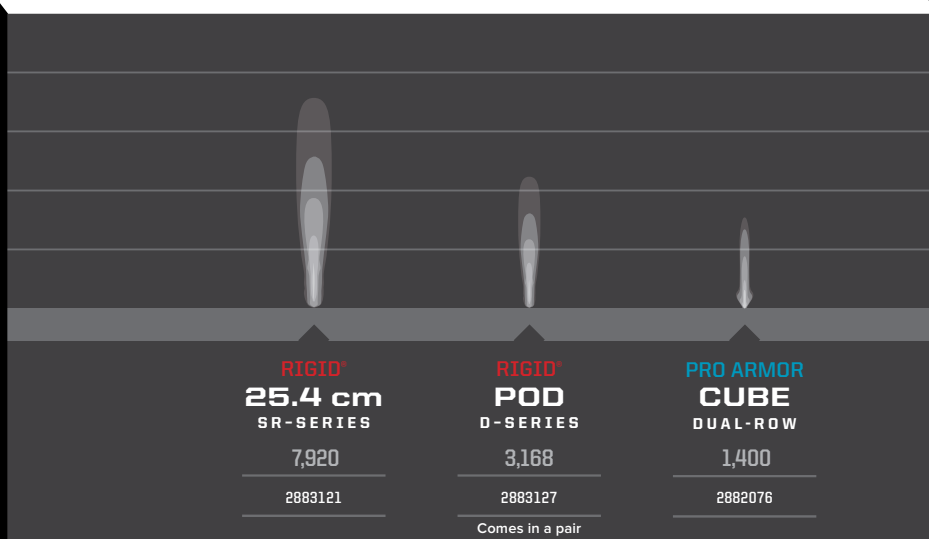
OPTICS DRIVING



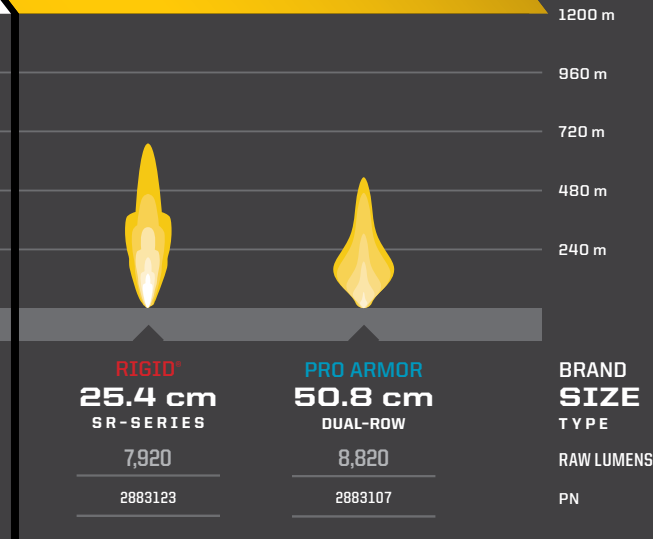
FLOOD



SPOT



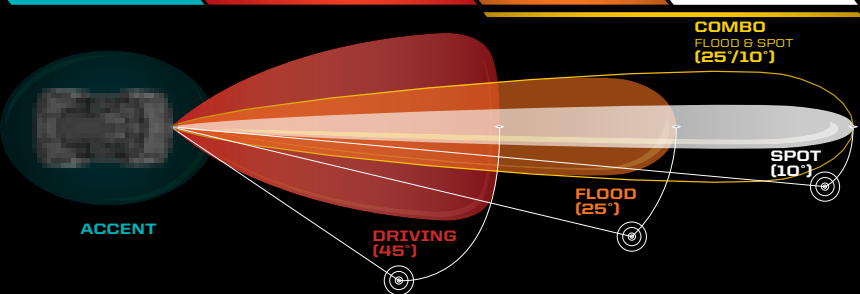
COMBO



BUILD
YOUR
VISION

Consider the Optics, Angle & how you will use your vehicle to choose the right light or set of lights.

OPTICS LIGHT ANGLE	ACCENT	DRIVING (45°)	FLOOD (25°)	SPOT (10°)	COMBO (25°/10°)
DRIVING SPEED	All	Slow	Medium	Fast	Medium to fast
BEAM	Diffused glow	Extra-wide	Wide/Shorter	Concentrated/Long	Inner spot & outer flood
RECOMMENDED MOUNTING	Low/Wheel well	All points	Low &/or rear	High points	All points
TERRAIN & RIDING STYLE	Added style & personalization in any terrain	All riding & utility	Wide-open terrain or trails & utility	Trail & tight conditions	All riding & utility



ACCENT LIGHTING



ACCENT LIGHT KIT

- Durable off-road ready construction that is both dust- and water-resistant
- Features CREE® LED for a long-lasting, brilliant light
- Set includes four LED pods

COLOR	LIGHTING KIT
RED	2880500
BLUE	2880506

ALL FULL-SIZE SPORTSMAN MODELS.

WIRING
HARNESSES

LIGHTBAR HARNESS

- Control one light with one switch
- » 2882320
ALL SPORTSMAN MODELS.

LED Y-HARNESS

- Y-Harness requires 2882320 to control two cubes or two lights with one switch
- » 2879860
ALL SPORTSMAN MODELS.

PROTECT THE GEAR YOU NEED. LIVE THE LIFE YOU LOVE.

THANKS TO OUR PARTNERS. We would like to thank our partners Browning[®] and Mathews[®] for helping to deliver a successful and safe off-road experience when out in the field.



Browning[®] is a registered trademark of Browning. Mathews[®] is a registered trademark of Mathews Archery Inc. Never transport a loaded firearm. Verify firearm is unloaded prior to mounting. Please refer to local laws and regulations regarding the requirements for the legal transport of firearms.

KOLPIN[®] RHINO GRIP[®] IDEAL FOR BOWS, CROSSBOWS AND UNCASSED LONG GUNS



LOCK & RIDE

KOLPIN RHINO GRIP[®] PRO

- » 2884119
- » 2884109 • REPLACEMENT RUBBER STRAPS
- ALL SPORTSMAN MODELS (EXCEPT UTILITY EDITIONS & YOUTH)

LOCK & RIDE

KOLPIN[®] RATCHETING RHINO GRIP[®]

- » 2881157
- ALL SPORTSMAN MODELS (EXCEPT UTILITY EDITIONS & YOUTH)

LOCK & RIDE

KOLPIN RHINO GRIP[®] XL DOUBLE

- » 2884120
- ALL SPORTSMAN MODELS (EXCEPT UTILITY EDITIONS & YOUTH)

LOCK & RIDE

KOLPIN RHINO GRIP[®] XL

- » 2881513
- » 2881621 • REPLACEMENT RUBBER STRAPS
- ALL SPORTSMAN MODELS (EXCEPT UTILITY EDITIONS & YOUTH)

KOLPIN STRONGHOLD[®] SYSTEM

Polaris is proud to partner with Kolpin[®] Outdoors, an industry leader in off-road accessories and the premier name in gun boots and mounts. If you need to secure a firearm or a pop-up blind while riding, simply attach the auto-latch mount and choose your case.

IDEAL FOR SECURED TRANSPORT OF SCOPED RIFLES AND SHOTGUNS

**KOLPIN STRONGHOLD[®] PRODUCTS SECURELY
PROTECT THE ESSENTIALS WHEN ON THE TRAIL.**



STEP 1 CHOOSE YOUR MOUNT



AUTO-LATCH BOOT MOUNT

- Precision angle adjustable for a custom fit
- Provides a quick and secure attachment point

- » 2882300
TOURING 570 SP '19, TOURING 570 '20, 570 SP '15-19, 570 '14-20, 450 H.O. '16-20
Does not fit 450 Utility models
- » 2882272
XP 1000 S '20, XP 1000 '17-20, 850 '17-20, 850 SP '17-19
does not fit with bodyguard bumper (2882090)

STEP 2 CHOOSE YOUR BOOTS



Includes
Transport Case

GUN BOOT[®] XL – TRANSPORT

- Lockable and TSA Approved
- 132.1 cm L x 9.5 cm W x 26.6 cm H

- » 2882430
Requires Auto-Latch Mount (2882272 or 2882300)



GUN BOOT[®] L

- 132.1 cm L x 12.1 cm W x 23.5 cm H

- » 2882426
Requires Auto-Latch Mount (2882272 or 2882300)



ICE AUGER / POP UP BLIND BOOT

- 116.8 cm L x 31.8 cm W

- » 2882427
Requires Auto-Latch Mount (2882272 or 2882300)



ICE ROD BOOT

- 99.1 cm L x 47 cm W x 15.2 cm H

- » 2882428
Requires Auto-Latch Mount (2882272 or 2882300)

KOLPIN[®] GUN BOOT IV

- For 50mm scopes, rifles with slings attached, or shotguns up to 129.54 cm in length

- » BLACK • 2872677
- » MOSSY OAK[®] BREAK-UP[®] • 2872677-419



2872677



2872677-419

LOCK & RIDE

GUN BOOT MOUNTS

- High-impact case secures firearm over any terrain
- Lock & Ride system mounts on right side
- Works with Lock & Ride XL Storage Box, Lock & Ride Rear Cargo Box, and Rear Rack Extenders

- » 2877381
XP 1000 S '20, XP 1000 '15-20, 850 '09-20
- » 2879888
570 SP '15-19, 570 '14-20, 450 H.O. '16-20
- » 2878001
TOURING XP 1000 '15-20, TOURING 850 SP '15-19, TOURING 850 '20,



KEEP IT
ICE COLD

GRIZZLY TESTED.
POLARIS APPROVED.



This cooler is IGBC-approved, meaning it withstands the power expended by a typical grizzly bear if it was trying to get inside.

Seriously, there are experts who know what a grizzly is capable of doing, and they certify our coolers can take it.

28, 57 & 99
LITER FEATURES



ComfortCarry
Handles



TravelLock
System



EasyOut
Drain System



NoSlip
Rubber Feet



PolarWall
Insulation



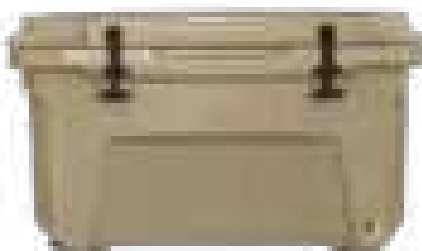
IceLock
Seal

POLARIS NORTHSTAR COOLERS CAN SURVIVE JUST ABOUT ANYTHING -
FROM EXTREME HEAT TO A NASTY TUMBLE OFF A VEHICLE.



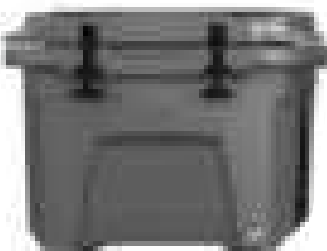
99 LITER

- » GRAPHITE • 2883426
- » DESERT • 2883392



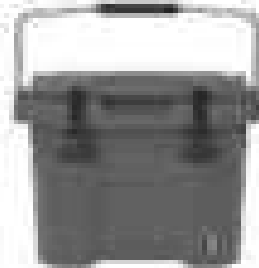
57 LITER

- » GRAPHITE • 2883425
- » DESERT • 2881259



28 LITER

- » GRAPHITE • 2883424
- » DESERT • 2881315



14 LITER

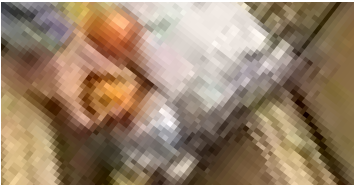

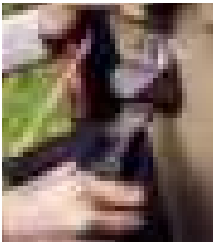
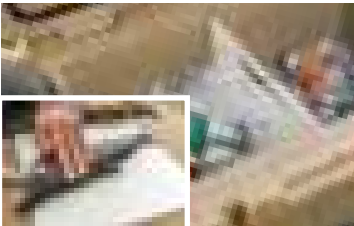



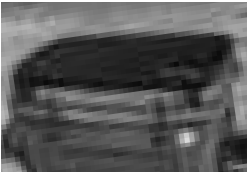
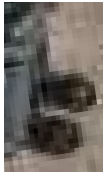

- » GRAPHITE • 2883968



19 LITER SOFTSIDED COOLER

- » GRAPHITE • 2883390

ESSENTIAL ACCESSORIES SO YOUR COOLER WORKS AS HARD AS YOU DO

COOLER ACCESSORIES		99 LITER	57 LITER	28 LITER	DON'T FORGET THESE ACCESSORIES	
	WIRE BASKET	2883648	2882185	2882438	 887 mL TUMBLERS » 887 mL • 2883394 » 591 mL • 2883393	 BOTTLE OPENER » 2882183 ALL COOLERS
	DIVIDERS Doubles as cutting board	2883468 COMES WITH ONE DIVIDER  1 way to partition	2882184 COMES WITH TWO DIVIDERS  2 ways to partition	2882186 COMES WITH ONE DIVIDER  1 way to partition		
 	SEAT CUSHION	NOT AVAILABLE	2882179	2882507		
	WHEELS	 2883967	2882180	NOT AVAILABLE		



SPECIFIC NEEDS, SPECIFIC OILS

Polaris invests millions in engine development, and part of that investment is making sure its lubricants—critical to engine performance—are the right formula for your specific engine. The amount of testing data and engineering resources used in developing Polaris lubricants would overwhelm an aftermarket company. Therefore, the aftermarket must spec an oil to an industry-wide standard that must account for a variety of operating parameters.

PS-4 is designed specifically for Polaris 4-cycle engines and has high film strength and wear protection under extreme loads and temperatures. Exclusive anti-wear additives protect engine parts with extra rust and corrosion protection.

PS-4 FULL-SYNTHETIC OIL

- PS-4 is optimal for ambient operating temperatures of -40° C to 38° C
- » 1L • 2877263
- » 4L • 2877264
- » 25 L • 2877868
- » 60 L • 502338
- » 200 L • 2878003

PS-4 OIL CHANGE KIT

- Contains the correct amount of oil for your vehicle and correct oil filter
- » 2202166
SINGLE 570, TWIN 600, TWIN 700, TWIN 800
- » 2879323
RANGER/RZR 900/1000
- » 2880913
POLARIS ACE/ETX 325
- » 2877473
330500, SPORTSMAN 550/850/1000

PS-4 EXTREME-DUTY FULL-SYNTHETIC OIL

- PS-4 Extreme Duty is optimal for ambient operating temperatures of -18° C to 53° C
- » 1L • 2879037
- » 4 L • 2879251
- » 25 L • 2879252
- » 60 L • 2879003
- » 200 L • 2879038



FOR THE LIFE OF YOUR RIDE ONLY THE BEST WILL DO

To create the best oil for any terrain, we invest in rigorous testing to ensure our oil delivers the consistency and performance you demand. The results are Polaris Engineered Lubricants that are tested and perfected to deliver excellent total engine protection for the life of your ride.

WHAT COUNTS IN OIL TESTING:

1. Does it protect the engine at high temperatures?
2. Does it keep the engine free from carbon and buildup?
3. Does the oil hold its viscosity over time?

ENGINE CHECKPOINTS

When evaluating an engine oil and its ability to protect and preserve the engine's power output and lifespan, Polaris engineers focus on key areas within the engine, some of the most critical ones include:

RING LANDS: Poor oxidative performance can lead to carbon and varnish buildup, which results in poor ring seal and loss of power, combustion blow by and fuel dilution of the oil.

PISTON RINGS: During the combustion process, extreme pressures are placed on the top ring, forcing it outward toward the cylinder wall, sealing the combustion chamber. With so much force applied, poor oil film strength between the top ring and the cylinder wall can lead to cylinder wear and loss of power.

ROD BEARINGS: Engine bearings ride on an extremely thin hydrodynamic film of oil. Poor oil film strength or using an oil with a thinner viscosity, can lead to premature bearing wear or even engine failure. Using an oil with high film strength and a strong viscosity, like PS-4 full synthetic, will extend the service life of your engine.

CAMSHAFT: Direct Acting Overhead Camshafts are used on many Polaris Prostar Engines. In this application the camshaft pushes directly on the valve, creating very high contact pressures compared to other camshaft configurations. These forces are so great that inferior oil can break down and be forced out of the contact area leading to increased wear. PS-4 full synthetic additives are specifically designed to provide wear protection against this.

OIL DEVELOPMENT



FOCUSED ON
POLARIS OIL



DEVELOPMENT
& TESTING



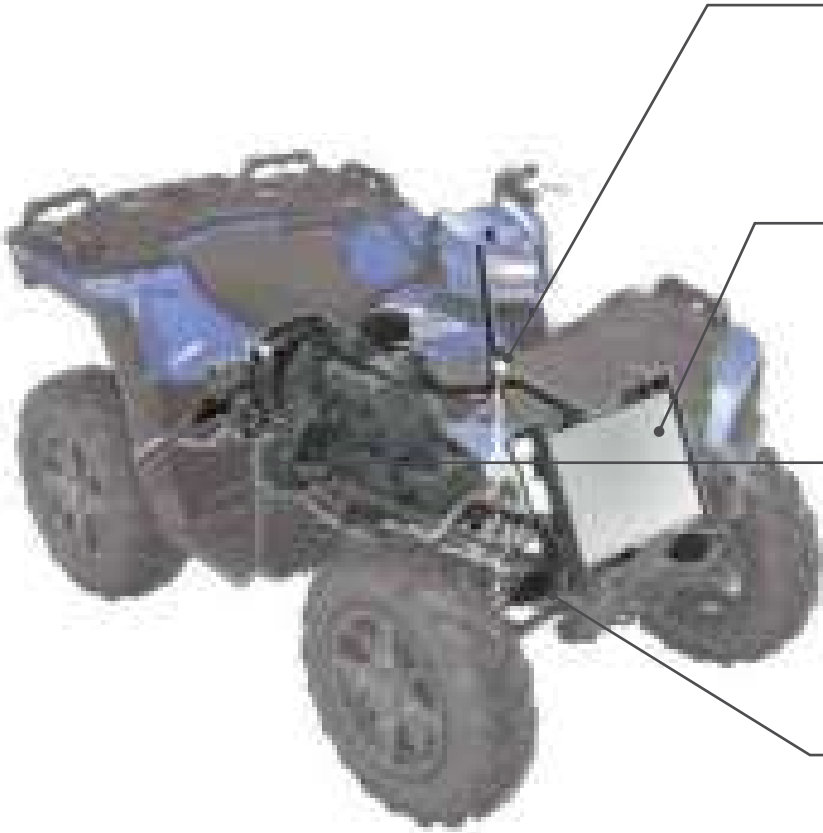
DYNO
TESTING



FIELD
TESTING

ENGINEERED TO MAXIMIZE THE LIFE OF YOUR RIDE

All Polaris fluids—from anti-freeze to brake fluid—are developed for your vehicle. Trust the only fluids perfectly engineered for your needs.



DOT 4 BRAKE FLUID

Polaris DOT 4 Brake Fluid is a high-quality brake fluid designed for use in Polaris hydraulic brakes. Superior high-temp characteristics plus anti-corrosive additives extend the life of brake system components and provide consistent, positive braking.

» 250 mL • 502081

ANTI-FREEZE

Polaris Extended Life Coolant contains organic acid technologies to prevent corrosion on metal components, eliminate scaling, and maximize cooling system performance.

» 1 L • 502103
» 25 L • 502271
» 206 L • 502091

AGL

A proprietary blend of additives designed to optimize Polaris® ORV transmission life. Extreme pressure additives protect gears, drive chain, and bearings from scoring and wear. Unlike typical gear case oils, AGL's unique viscosity range allows instant flow and film protection in extreme cold or high heat environments.

» 1 L • 502080
» 200 L • 502151
» 25 L • 502152

DEMAND DRIVE FLUID

Engineered specifically for Polaris ORV front drive systems. Provides positive 4WD engagement in extreme cold or high heat conditions. Unique friction additives protect internal components under heavy loads and promote positive engagement.

» 1 L • 502094
» 200 L • 502264
» 25 L • 502267

Proper lubricant application and timing will ensure optimal vehicle performance. Please refer to your owner's manual for lubricant change interval schedules.



CARBON CLEAN

Polaris Carbon Clean prevents ethanol corrosion, stabilizes fuel, and cleans fuel injectors, piston ring lands, intake systems, and combustions chambers. Helps maintain peak HP and improves fuel economy.

» 125 mL • 502082



FUEL STABILIZER

Fuel Stabilizer prevents ethanol corrosion and stabilizes fuel for up to 2 years. Dual-antioxidant formula protects against gum and varnish for easy starting.

» 125 mL • 502100



ANGLE DRIVE FLUID

» 1L • 502089
» 25 L • 502268
» 202 L • 502266
SPORTSMAN, RANGER, RZR ANGLE DRIVE GEAR CASE SYSTEMS



PREMIUM GAS SHOCK OIL

» 1L • 502098



ALL-SEASON GREASE TUBE

» 400 g • 502068

FOR THE LIFE OF YOUR RIDE

MAINTENANCE TIP

BREAK-IN PERIOD

The break-in period for your new Sportsman is the first 25 hours of operation, or the time it takes to use the first two tanks of fuel. No single action on your part is as important as a proper break-in period. Careful treatment of a new engine will result in more efficient performance and longer life for the engine. Perform the listed procedures carefully.

NOTICE: Excessive heat build-up during the first three hours of operation will damage close-fitted engine parts. Do not operate at full throttle or high speeds for extended periods during the first three hours of use.

BATTERIES

Never leave a battery unattended during the storage season. To ensure your battery maintains its level of charge when unused for extended periods of time or during freezing weather, the battery should be connected to a BatteryMINDER®, P. 56. Be sure to check for corrosion from the terminals to the ends of the cables.

BRAKE PADS

Check your brakes if you are close to the recommended service interval, hear grinding when applying the brakes, your vehicle is taking longer to stop or if you have to apply more pressure to your pedal to engage the brakes. Check the brake discs for signs of cracks, excessive corrosion or warping.

If the brake pads are contaminated with oils or grease (petroleum products), brake pads have to be discarded and replaced.

Discs need to be cleaned with brake cleaner or alcohol based cleaner only.

HALF SHAFT

Extreme elements can contribute to axle failure when grease escapes the joint. This usually occurs if the CV boot becomes compromised. Full replacement or part specific available.

POLARIS ENGINEERS PARTS THAT PUSH THE LIMITS WITHOUT SACRIFICING STRENGTH AND DURABILITY. We build our products so anyone with the right tools can maintain their vehicle from their own garage - and get them back on the trails where they belong.

AIR FILTERS

Critical to engine performance and reliability. A clogged air filter can restrict air flow to the engine leading to reduced engine performance. Dirt and debris ingestion can damage the engine leading to reduced engine life or catastrophic failure. Polaris recommends changing the vehicle's air filter at the specified intervals outlined in the owner's manual, which may be shorter if your vehicle is subject to severe conditions.

DRIVE BELTS

Polaris Engineered belts deliver unmatched performance for your off-road vehicle. Developed and tested on all our engines for all environments and conditions. Check your belt for delamination, hour glassing and glazing.

BREAK-IN PERIOD

- Use lower gear (if available) while varying speeds and avoiding wide open throttle for 8-16 km
- If no low gear is available, vary at moderate speeds while avoiding wide open throttle for 80 km

OUR INVESTMENT

- 32,187 km of field testing
- Thousands of dyno hours
- 18+ months of development (3,000+ design hours) per belt
- 1200+ vehicle validation hours
- Collaboration with powertrain & clutch engineers

YOUR ADVANTAGE

- No clutch recalibration
- Less wear & tear due to heat
- Ensure maximum vehicle performance
- More time riding, less time wrenching
- Produced in collaboration with powertrain and clutch engineers to ensure a perfect fit, maximum performance and ultimate durability

OIL FILTERS

Change oil filters with every oil change to provide the best protection for your engine. Superior engine protection keeps your engine operating at peak performance. Be sure to follow the suggested service intervals for oil/oil filter changes.

MAINTENANCE SCHEDULE

25 HRS/400 km BREAK-IN MAINTENANCE

- ENGINE OIL:** CHANGE
- GENERAL LUBRICATION:** ALL FITTINGS, PIVOTS, CABLES, ETC.
- AIR FILTER:** INSPECT & CLEAN
REPLACE AS NEEDED
- EXHAUST SYSTEM:** INSPECT & CLEAN
INSPECT FOR LEAKAGE OR CARBON BUILD UP AT JOINTS
INSPECT & CLEAN SCREEN TYPE SPARK ARRESTOR

50 HRS/800 km 6 MONTHS

- EXHAUST SYSTEM:** INSPECT & CLEAN
INSPECT FOR LEAKAGE OR CARBON BUILD UP AT JOINTS
INSPECT & CLEAN SCREEN TYPE SPARK ARRESTOR
- GENERAL LUBRICATION:** ALL FITTINGS, PIVOTS, CABLES, ETC.
- DRIVE BELT:** INSPECT & ADJUST
REPLACE AS NEEDED

100 HRS/1600 km 12 MONTHS

- ENGINE OIL:** CHANGE
- DRIVE BELT:** INSPECT & ADJUST
REPLACE AS NEEDED
- TRANSMISSION FLUID:** CHANGE
- EXHAUST SYSTEM:** INSPECT & CLEAN
INSPECT FOR LEAKAGE OR CARBON BUILD UP AT JOINTS
INSPECT & CLEAN SCREEN TYPE SPARK ARRESTOR

150 HRS/2400 km 18 MONTHS

- ENGINE OIL:** CHANGE
- BATTERY:** TEST, CLEAN, & CHECK FLUID LEVEL
REPLACE AS NEEDED
- DRIVE BELT:** INSPECT & ADJUST
REPLACE AS NEEDED
- TIRES:** INSPECT CONDITION & PRESSURE
- EXHAUST SYSTEM:** INSPECT & CLEAN
INSPECT FOR LEAKAGE OR CARBON BUILD UP AT JOINTS
INSPECT & CLEAN SCREEN TYPE SPARK ARRESTOR

200 HRS/3200 km 24 MONTHS

- ENGINE OIL:** CHANGE
- BRAKE PADS & FLUID:** INSPECT & CLEAN
REPLACE AS NEEDED
- SPARK PLUGS:** INSPECT
REPLACE AS NEEDED
- EXHAUST SYSTEM:** INSPECT & CLEAN
INSPECT FOR LEAKAGE OR CARBON BUILD UP AT JOINTS
INSPECT & CLEAN SCREEN TYPE SPARK ARRESTOR

350 HRS/4020 km 30 MONTHS

- ENGINE OIL:** CHANGE
- BATTERY:** TEST, CLEAN, & CHECK FLUID LEVEL
REPLACE AS NEEDED
- DRIVE BELT:** INSPECT & ADJUST
REPLACE AS NEEDED
- GENERAL LUBRICATION:** ALL FITTINGS, PIVOTS, CABLES, ETC.
- EXHAUST SYSTEM:** INSPECT & CLEAN
INSPECT FOR LEAKAGE OR CARBON BUILD UP AT JOINTS
INSPECT & CLEAN SCREEN TYPE SPARK ARRESTOR

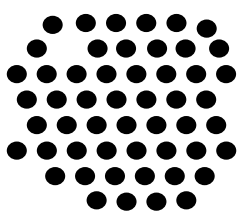
500 HRS/8045 km 36 MONTHS

- ENGINE OIL:** CHANGE
- AIR FILTER:** INSPECT, CLEAN
REPLACE AS NEEDED
- COOLANT:** CHECK LEVEL
REPLACE EVERY 2 YEARS
- GEARCASES:** CHECK OIL LEVEL
- EXHAUST SYSTEM:** INSPECT & CLEAN
INSPECT FOR LEAKAGE OR CARBON BUILD UP AT JOINTS
INSPECT & CLEAN SCREEN TYPE SPARK ARRESTOR

CHECK YOUR OWNER'S MANUAL FOR ADDITIONAL RECOMMENDED SERVICE ITEMS AND VEHICLE-SPECIFIC TIMING

HD HEAVY DUTY PARTS

All Polaris parts are developed and tested to help you get the most out of your ride. Now, we're taking the passion of our riders, workers, and outdoor enthusiasts to the next level with HD Parts. These heavy-duty parts are engineered for riders who want greater durability and enhanced performance. HD Parts are designed and tested to handle greater wear and tear under all weather conditions. This means longer ride times with less service interruptions and related costs.



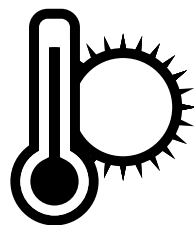
DUST



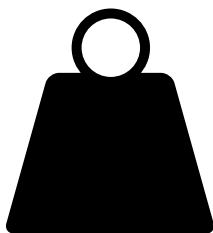
MUD



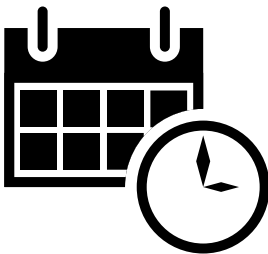
EXTREME COLD
DOWN TO -40° C



EXTREME HEAT
UP TO 54° C



HEAVY PAYLOADS



EXTENDED LIFE

SUSPENSION BOOTS*

- Thicker, stronger boot material better withstands cuts and tears
- Prevents the intrusion of water and contaminants, increasing joint life
- More resistant to cracking due to aging

BRAKE PADS*

- Longer wear life
- Improved braking in wet & muddy conditions

WHEEL BEARINGS*

- Utilizes a triple lip seal for improved protection against mud and debris
- Longer life between service and replacement
- Specifically designed for Polaris vehicles

TIRES*

- Increased tread life
- Material and design for enhanced puncture resistance

LUBRICANTS*

- High-temperature engine protection
- Increased rust and corrosion protection
- Reduced chance of thermal breakdown in high-temp environments

BATTERIES*

- Improved starting in cold/poor conditions means increased performance of accessories and longer vehicle operation.
- **Larger Capacity**
Measured in Ah (Ampere Hours)
HD batteries store more energy
 - **Higher Output**
Measured in CCA (Cold Cranking Amps)
HD batteries deliver more power when starting and power more auxiliary items

*Claims made based off testing and performance of Polaris HD Parts against standard OEM parts made by Polaris and competitor brands under normal use.

For more information regarding Polaris HD parts including vehicle compatibility, installation, and maintenance, please contact your authorized Polaris ORV dealer (Ranger, ATV, RZR).

SERVICE PARTS

Polaris Engineered service parts deliver unmatched performance and fit for your off-road vehicle.

All service parts are engineered specifically for your machine. Which means everything is designed, tested and perfected to maximize the life of your ride. Getting Polaris Engineered parts is a decision that pays off in the long run, because it ensures there is a long run.



VISIT YOUR POLARIS DEALER TO
SHOP FOR SERVICE PARTS.

OVER
100,000
PARTS
AVAILABLE!



FOR THE LIFE OF YOUR RIDE

Maintenance is the key to keeping your Polaris off-road vehicle performing at its peak. Items like belts, lubricants, and batteries represent only a few of these critical items engineered specifically by Polaris.



POLARIS ENGINEERED DRIVE BELTS

TESTED, PERFECTED

We test each belt on the intended vehicle – we don't just try to make an existing belt "just work".

– Amery Kuhl, Polaris CVT System Engineer

OUR INVESTMENT

- 32,187 km of field testing
- Thousands of dyno hours
- 18+ months of development (3,000+ design hours) per belt
- 1200+ vehicle validation hours
- Collaboration with powertrain & clutch engineers

YOUR ADVANTAGE

- No clutch recalibration
- Less wear & tear due to heat
- Ensure maximum performance of your vehicle
- More time out riding, less time wrenching





OUR INVESTMENTS ENSURE POLARIS BELTS
OUTPERFORM YOUR EXPECTATIONS.



BatteryMINDER®

ENSURE YOUR RIDE IS
READY WHEN YOU ARE.

- Add years of capacity, power and range to new and older batteries, regardless of type or brand
 - Never over- or under-charged in any temperature
 - Leave your vehicle connected for months and return to fully charged and conditioned batteries
- Recover older or weak batteries that would normally need to be replaced
 - Charge and maintain extra backup batteries as well as those in your vehicle
- Automatic turn-on, sleeps while keeping your batteries at full charge
 - Easy push-button selector to change battery type or time

				
	2012 AGM 2-AMP	2012 LEAD ACID 2 AMP	1510 1.5 AMP	1.5 AMP CONVERTIBLE
PART NUMBER	2830438	2830531	2830404	2830511
VOLTAGE	12 V	12 V	12 V	12 V
CHARGING CURRENT	2AMP	2AMP	1.5AMP	1.5AMP
OVERCHARGE PROTECTION	Yes			
BATTERIES MAINTAINED	6 at one time		4 at one time	
BATTERY COMPATIBILITY	12 V Sealed AGM Lead-Acid	12 V Flooded (filler cap) and Sealed Maintenance-Free Batteries		
COMES WITH	<ul style="list-style-type: none">• Non-fused battery clip cord set with Quick Connector	<ul style="list-style-type: none">• BC-2410: 61 cm Non-fused battery clip cord set with Quick Connector• RTA-2415: 61 cm Fused ring terminal cord set with Quick Connector• ATS-1: Ambient Temperature Sensor	<ul style="list-style-type: none">• Ambient temperature sensor (installed)• 3.7 m power cord• Battery clip cord set with Quick Connector• Optional permanent mounting tab	<ul style="list-style-type: none">• Auto-temp compensation sensor (installed)• Optional permanent mounting brackets & screws• Battery clips (fully-insulated, aircraft grade, 15A replaceable fuse)• Ring terminal assembly with 15A replaceable fuse
KEY FEATURES	Designed for high-performance specialty AGM sealed batteries	Diagnoses battery's condition - can predict failing batteries	Easy to use, economical	Convertible on-vehicle or bench top use

BATTERY MAINTENANCE TIPS

Extend your battery life with a BatteryMINDER® and these tips.

1. Store batteries in a cool, dry location.
2. Check that the battery connections are tight. Cables should not be able to be rotated or shifted by hand.
3. If your battery has a drain tube, make sure it is free of clogs.
4. Clean your battery - use a soft brush to scrub the top of the battery. Use baking soda to remove grease.
5. Connect a BatteryMINDER® after using your vehicle even if the vehicle is in regular use.

BATTERYMINDER® ACCESSORIES



BatteryMINDER® 3.7 m CABLE

- Made with heavy-duty 16 gauge black zip cord featuring automotive SAE bullet connectors

» 2830410



BatteryMINDER® VPP-12:12/24 VOLT VEHICLE POWER PLUG

- Allows easy connection to vehicle's battery through lighter or 12/24V power port with replaceable 15 amp fuse

» 2830518



BatteryMINDER® SPLITTER

- Connect two batteries simultaneously for easy battery maintenance
- Includes a set of ring terminals

» 2830409



BatteryMINDER® RING TERMINAL

- Features 61 cm long 18-gauge wire
- Plug has standard .8 cm negative and .95 cm positive terminals
- Replaceable 15 amp in-line fuse for circuit protection

» 2830437



BatteryMINDER® EZ CONNECT

- Allows for quick and easy connecting and disconnecting of your BatteryMINDER®
- Includes a set of ring terminals

» 2830411

LIFT IT SECURELY LIFT IT SAFELY



POLARIS VEHICLE LIFT

- Get fast, easy access to the underside of your vehicle
 - Manual and pneumatic operation available
 - Raises vehicle up to 82 cm to make repairs and maintenance faster and easier
- » 544 kg • 2830424

LIFT ATTACHMENTS

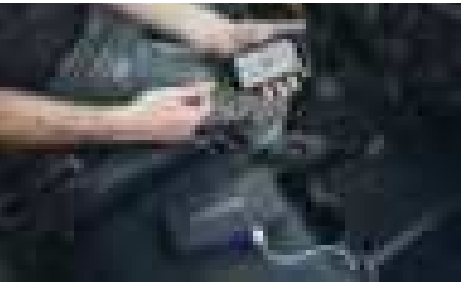
- Add the appropriate attachment to use your lift for all your off-road vehicles
- » ATV • 2830427
» SNOWMOBILE • 2830426



POLARIS FLEX JUMPSTARTER

- 12,000 mAh capacity. Two 5V/2.1A USB outputs, 200-lumen flashlight, and a digital battery life monitor. Includes storage case, smart jumper cables, car charger, wall charger, and user guide.
- Jumpstart any engine up to 6.4L. The Polaris Flex Jumpstarter is small enough to be stored in your glovebox and holds its charge so you can count on it when it's needed.

» 2830495

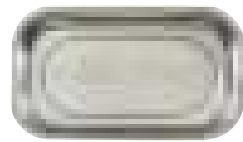


POLARIS X3 CREEPER

- Three positions: flat, 45-degree angle or seated work stool
- Helps you perform any repair with ease
- Stay dry and warm away from cold, wet cement floors
- Easily stores away when not in use

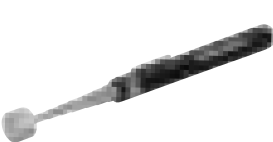
» BLACK • 2830429

SHOP ACCESSORIES



POLARIS MAGNETIC PARTS TRAY

» SILVER • 2830432



POLARIS 8.4 cm TELESCOPIC MAGNET

» BLACK • 2830435



POLARIS 30.5 cm HI-TORQUE RATCHETING DRIVER

» BLACK / BLUE • 2830434



POLARIS LED POCKET FLASHLIGHT

» BLACK • 2830436

CV BOOT REPAIR KIT

- A quick trail side fix to increase trail time
- The flexible and durable boot material expands over a cone tool for CV boot repairs, without disassembling CV axles
- Universal fit - works as a temporary fix for most powersports axles
- All components fit inside the cone, and a cover is provided for compact durable storage
- Easily fits in a cargo box, attached to the roll cage, in the glovebox, or many other storage locations

Items shown are contained inside cone

FIX ON THE GO | TEMPORARY COVERAGE

ATV CV BOOT REPAIR KIT

Kit includes the following items:

- (1) Expandable CV Boot
- (1) Reusable Cone Tool
- (2) CV Boot Clamps
- (1) Tube of Silicone Lube
- (1) Grease Packet
- (1) Cone Cover

» 2830528

ATV TRAIL BOOT ONLY

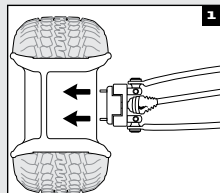
» 2830529

UTV

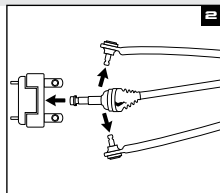
» CV REPAIR KIT 2830526

» TRAIL BOOT ONLY 2830527

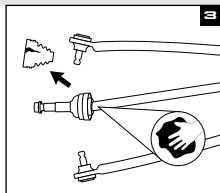
HOW TO INSTALL



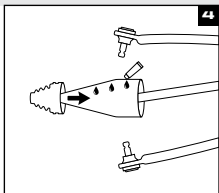
Remove wheel and axle nut.



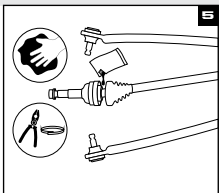
Remove brake caliper, hub, tie rod, & upper & lower ball joints.



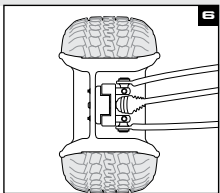
Remove old boot & clean joint.



Spread silicone lube on entire cone tool. Slide boot over cone tool, large end first. See package for outer boot instructions.



Empty the bag of grease into the CV joint/boot, clean sealing points & install clamps.



Reassemble tie rod, ball joints, brake caliper, axle nut, tire & wheel.

Refer to your owner's manual for further instructions and torque specifications.
*Designed for temporary CV boot repair. Purchase the OEM CV Boot for a permanent repair.

CLEAN

ALL-PURPOSE CLEANER

- Professional cleaner, which is formulated with a low pH-value. The product spreads well on surfaces and adheres on them for effective cleaning action. Perfectly compatible with rubber, plastic and painted surfaces. The formulation is biodegradable.

» 500 mL • 502309

SHINE

INSTANT SHINE & DETAILER

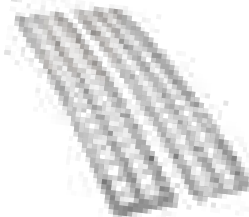
- The INSTANT SHINE AND DETAILER is developed for cleaning action without water. Removes insects, dust and dirt with almost no effort. Applicable for plastics, visors, windscreens, paint and metal. The wipe and shine formulation makes surfaces shine, works water repellant and also has an antistatic effect. Perfect for customers living in urban areas with no access to water, for bike trips or showroom bikes.

» 500 mL • 502303



BRING IT EVERYWHERE

TRAILERING



ALUMINUM ARCHED LOADING RAMPS

- » 193 cm x 30.5 cm • 907 kg • 2875384
- » 224 cm x 30.5 cm • 1361 kg • 2875386



LIGHTWEIGHT ALUMINUM TRI-FOLD LOADING RAMPS

- Ramp folds up for transport
- Capacity for up to 680.7 kg
- Safety straps included
- » 183 cm x 130 cm • 2875385
- » 208 cm x 130 cm • 2875860



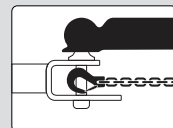
COMPACT ALUMINUM ARCHED LOADING RAMPS

- Ramp folds up for transport
- Capacity up to 1361 kg
- Safety straps included
- » 224 cm x 30.5 cm • 2875387

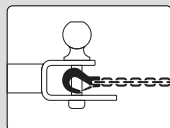
HITCHES

3:1 HITCHES

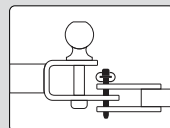
VERSATILE 3 IN 1 FUNCTIONALITY



BALL



HOOK



PIN

- Ball, pin and hook design
- Durable, rust resistant steel with black powdercoated finish



HITCH WITH 5 cm BALL

- » 5 cm x 5 cm RECEIVER 2830522
- » 3 cm x 3 cm RECEIVER 2830523



4.8 cm BALL

- 4.8 cm replacement ball for hitch
- Designed to work with 3:1 Hitch
- » 2830524



RECEIVER HITCH

- » 5 cm RECEIVER TONGUE 2875320
- » FRONT HITCH RECEIVER 2878846



TRAILER BALL AND SHANK

- » 4.8 cm BALL • 2877602
- » 5 cm BALL • 2877603

STRAPS & ROPES



RECOVERY STRAP

- 5 cm x 9.1 m (8165 kg)
- Comes with carry bag
- » 2884033



RATCHET STRAP

- 3.8 cm x 4.6 m straps, 2 Pack
- Heavy duty webbing
- 2495 kg maximum load, 831 kg working load
- » 2884031



RATCHET STRAP

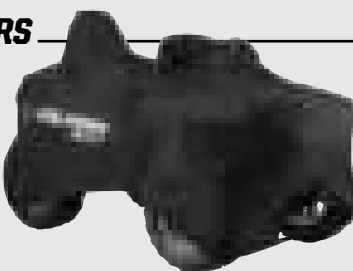
- 5 cm x 6.1 m Ratchet Straps
- Heavy duty webbing, floating D-rings, double J-hooks
- 4536 kg maximum load, 1497 kg working load
- » 2884032



SHOCK STRAPS

- 3.8 cm 1361 kg breaking strength
- Keeps tension on tie-down straps to secure load, 2 Pack
- » 3.8 cm x 4.6 m • 2883296
- » 3.8 cm x 2.1 m • 2883295

COVERS



TRAILERABLE COVER

- » 2876614
- ALL SPORTSMAN EXCEPT 300/400, XP 1000 S '20, SCRAMBLER XP 1000 S '20, X2, TOURING
- » 2877999
- ALL SPORTSMAN TOURING

- » 2877998
- ALL SPORTSMAN X2
- » 2884188
- XP 1000 S '20, SCRAMBLER XP 1000 S '20

RIDING JERSEYS & GLOVES

NEW

OFF-ROAD RIDING JERSEYS
S-3XL

- Mesh ventilated panels for maximum airflow
- Elastic sleeves with non-restrictive cuffs

NEW

OFF-ROAD RIDING GLOVES
S-3XL

- Adjustable wrist closure for a custom fit
- Comfort in the details: silicon finger grips and neoprene knuckle protection



NEW

YOUTH JERSEY
S-XL

MULTICOLOR | 2860652
BLUE | 2860651



BLACK
JERSEY | 2860646
GLOVE | 2860641

BLUE/LIME
JERSEY | 2860647
GLOVE | 2860642

MULTICOLOR
JERSEY | 2860648
GLOVE | 2860643

NAVY/PINK
JERSEY | 2860649
GLOVE | 2860644

RED
JERSEY | 2860650
GLOVE | 2860645



**BOLD
TECHNICAL
GEAR TO
INSPIRE EVERY
ADVENTURE**

COOLING SHIRTS

NEW

MEN'S LONG SLEEVE COOLING SHIRT
S-3XL | 2860638

NEW

WOMEN'S LONG SLEEVE COOLING SHIRT
S-3XL | 2860640

NEW

SHORT SLEEVE COOLING SHIRTS

MEN'S S-3XL | 2860634
WOMEN'S S-3XL | 2860636

FABRIC TECHNOLOGY DESIGNED TO KEEP YOU COOL

Cooling fabric designed with sun protection in mind. Our chemical-free fabric Coolcore reduces the surface temperature on our cooling shirt up to 30%, so you don't overheat. It carries a 50 Ultraviolet Protection Factor rating, the highest attainable, blocking 98% of harmful UV rays. Available in long and short sleeve.

POWERED BY coolcore

Moisture Wicking
Moisture Transportation
Regulated Evaporation

LAYERING

FULL ZIP MID LAYER
S-3XL
BLACK/PINK | 2860564

- Enhanced fit for full range of movement
- 280 grams of breathable fleece

MEN'S TRAIL MID-LAYER
S-3XL
NAVY | 2860552
GRAY | 2869925

- Wind blocking layer on chest
- 280 grams of breathable fleece

WOMEN'S GRAY/PURPLE
S-3XL | 2860549

MEN'S GRAY/BLUE
S-3XL | 2860548

MEN'S BLACK
S-3XL | 2868512

HELMETS

509 FOR POLARIS®

509® ALTITUDE HELMET

STYLISH, LIGHTWEIGHT HELMET WITH 509® FIT AND FINISH

SHELL

- Thermoplastic poly alloy outer shell

WEIGHT

- 1260 grams

FEATURES

- Revolutionary neck brace-ready shell profile
- Specially designed expanded polyurethane chin insert
- Eight intake/exhaust vents
- Universal camera mount included
- Removable breath box included
- Three outer shell molds across eight sizes for excellent fit
- DOT- and ECE 22.05-approved



LIME
S-4XL | 2868539



ORANGE
S-4XL | 2867818



BLUE
S-4XL | 2867820



RED
S-4XL | 2867819



GRAY
S-4XL | 2867817



509® ALTITUDE CARBON HELMET

DURABLE, ULTRA LIGHTWEIGHT, CARBON FIBER

SHELL

- Full carbon fiber shell

WEIGHT

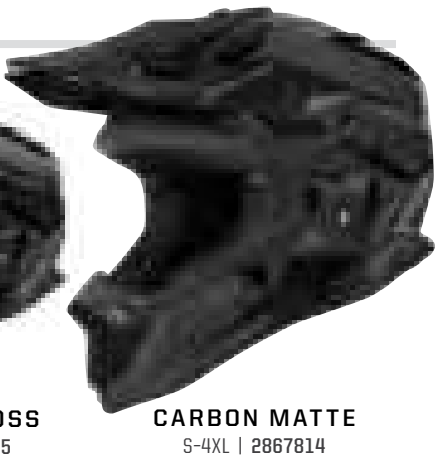
- 1100 grams

FEATURES

- Fidlock® magnetic chin strap technology, easy-on/off technology
- Revolutionary neck brace-ready shell profile
- Removable breath box included
- Universal camera mount included
- Eight intake /exhaust vent ports
- Fully convertible for winter and summer use
- Three outer shell molds across eight sizes for excellent fit
- DOT- and ECE 22.05-approved



CARBON GLOSS
S-4XL | 2867815



CARBON MATTE
S-4XL | 2867814

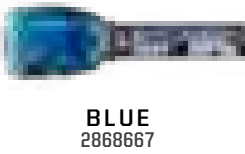
GOGGLES

KINGPIN 509® DIRT GOGGLE

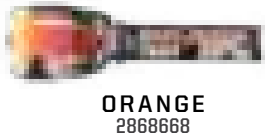
PREMIUM MATERIALS, ATTRACTIVE PRICE

FEATURES

- Oversized spherical lens delivers optimal peripheral vision
- Metal tear off posts provide strength and durability
- Quick-Change technology allows you to run the best lens tint for conditions



BLUE
2868667



ORANGE
2868668



BLACK
2868669



RED
2868670



LIME
2868671

TENACITY HELMET

ALL THE STYLE & PROTECTION IN OUR MOST AFFORDABLE HELMET

SHELL

- Injection-molded plastic

WEIGHT

- 1450 grams

FEATURES

- Stay cool when pushing the limits with oversized mouth intake and top vents with six rear exits
- Stay warm on cold days with optional breath deflect or insert (sold separately)
- Removable, machine-washable liner keeps things fresh ride after ride
- DOT- and ECE 22.05-approved



RED GLOSS
XS-2XL | 2868623



BLACK MATTE
XS-2XL | 2868619



LIME GLOSS
XS-2XL | 2868621



BLUE GLOSS
XS-2XL | 2868622



BLACK/GRAY
XS-2XL | 2868620



PINK GLOSS
XS-2XL | 2868624



TEKVEST®

ULTIMATE PROTECTION

VISIT POLARIS.COM FOR TEKVEST® SIZING



TEKVEST® SUPERSOFT
S-3XL | 2862190

- Zip-off fleece collar diffuses rising body heat to reduce fogging
- Large arm openings for unrestricted movement
- Drop-tail design for extended coverage
- 2-stage pockets



TEKVEST® FREESTYLE
S-3XL | 2862189

- Strong, protective ultra high molecular weight panels cover shoulders
- Front and rear mesh panels promote cooling airflow
- Large arm openings for unrestricted movement
- Use off-roading and/or snowmobiling



TEKVEST® SHOULDER PADS
S-3XL | 2862192

- Strong and protective Ultra High Molecular Weight Polyethylene
- Adjustable bicep strap
- Quick-attach design for installation or removal in seconds



TEKVEST® YOUTH
S-3XL | 2862191

- Adjustable side straps and arm straps
- Strong, protective ultra high molecular weight panels cover shoulders
- Large arm openings for unrestricted movement

OUTERWEAR



FLANNEL JACKET
CHARCOAL
S-3XL | 2860865

WORK JACKET
GRAY
S-3XL | 2860863


NEW

FLANNEL JACKET

Stylish and warm flannel shirt/jacket with front snap closure available in 2 colorways. Soft yet durable brushed flannel on the outside lined with warm Sherpa fleece on the inside. Available in Men's sizing S-3XL.

Ample storage with 5 total pockets:

- External pockets include 2 chest and 2 hand pockets with snap closures
- One internal pocket with zip closure



BRONZE
S-3XL | 2860864

NEW

WORK JACKET


This warm and rugged jacket was engineered to be tough enough for work and stylish enough for play. The outer fabric is crafted with Nylon 6, a durable, non-stretch woven fabric that is rugged and tear resistant but feels like a soft, comfortable material. Protection and warmth with 100% nylon shell coated with durable water repellency (DWR).

External features:

- Superior Durable Water Repellent (DWR) treatment provides water-resistance in the elements
- Four external pockets for maximum gear storage
- Customized fit with Velcro® wrist closure cuffs

Internal features:

- 80 gram 3M® Thinsulate for warmth on chilly days
- Built in action back provides comfortable movement and increased range of motion
- Internal zipper pocket
- Brushed flannel trim



GREEN
S-3XL | 2860862

JACKETS

NEW
BLUE/PINK
S-3XL | 2860546


NEW
NAVY
S-3XL | 2860545

SOFTSHELL JACKET

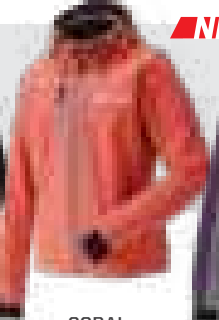
LIGHTWEIGHT PERFORMANCE THAT'S SURPRISINGLY WARM AND PERFECT FOR EVERYDAY WEAR

- DWR prevents precipitation from saturating the jacket's exterior
- Three external and one internal pocket
- Lined with 280 grams of soft fleece for warmth
- Removable hood and underarm venting

WOMEN'S




BLACK
S-3XL | 2869920




CORAL
S-3XL | 2869921

NEW




PURPLE/LIME
S-3XL | 2860547

MEN'S




BLACK
S-3XL | 2869918



BLUE/ORANGE
S-3XL | 2869919

NEW



BLACK/LIME
S-3XL | 2860544

RAIN SUIT

RAIN JACKET
GRAY
S-3XL | 2869527

RAIN PANTS
GRAY
S-3XL | 2869528

- 100% waterproof lightweight and packable nylon
- YKK® Zippers
- Rain jacket has removable hood

OUTERWEAR
BUILT TO
WORK HARD
& PLAY HARD

APPAREL & HELMETS

OUTERWEAR & PROTECTION

LIFESTYLE & CAPS

CAMMO & GIFTS

62

63



MEN'S CORE FULL-ZIP HOODIE
S-3XL
NAVY/RED | 2860565
BLACK/LIME | 22860566



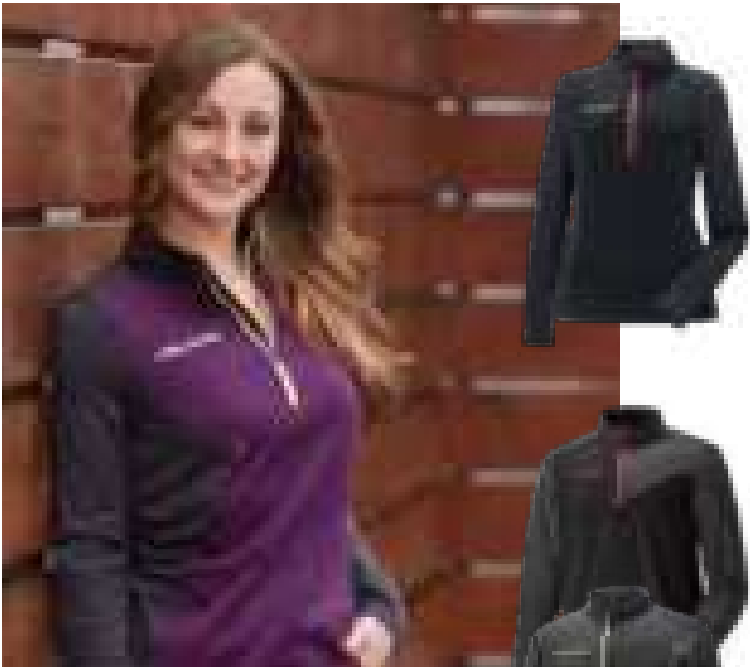
WOMEN'S CORE FULL-ZIP HOODIE
S-3XL
GRAY/BLUE | 2860567
BLACK/PINK | 2860615



WOMEN'S ROSEAU TEE
S-3XL
BLACK | 2868586
NEW PURPLE FROST | 2860591
GRAY FROST | 2869559



MEN'S ESTA TEE
S-3XL
NEW OLIVE HEATHER | 2860589
CHARCOAL | 2869552
NAVY | 2869562



QUARTER ZIP
S-3XL
WOMEN'S BLACK | 2860550
WOMEN'S PURPLE | 2860551
MEN'S BLACK | 2869535
MEN'S GRAY | 2869536



MEN'S LONG SLEEVE DASH TEE
S-3XL
BLACK | 2860568
GRAY FROST | 2860569

CAPS



NEW CAMO TRUCKER HAT
One-Size
BLACK | 2860613
PINK | 2860614



PATCH CORE HAT
BLACK S/M | 2868579
BLACK L/XL | 2868580
NAVY S/M | 2868581
NAVY L/XL | 2868582



DASH SNAPBACK HAT
One-Size
BLACK | 2860595
GRAY | 2860596



CORE SNAPBACK HAT
One-Size
BLACK | 2867762
NAVY | 2869544



PATCH TRUCKER HAT
One-Size
BLACK | 2860597
NAVY | 2860598



RETRO TRUCKER HAT
One-Size
GRAY/RED | 2869542
GRAY/BLUE | 2869543



KNIT PATCH BEANIE
One-Size
BLACK | 2860601
GRAY | 2860602



FLEECE REVERSIBLE BEANIE
One-Size
CAMO/GRAY | 2868648
CAMO/BLAZE ORANGE | 2867756

CAMO

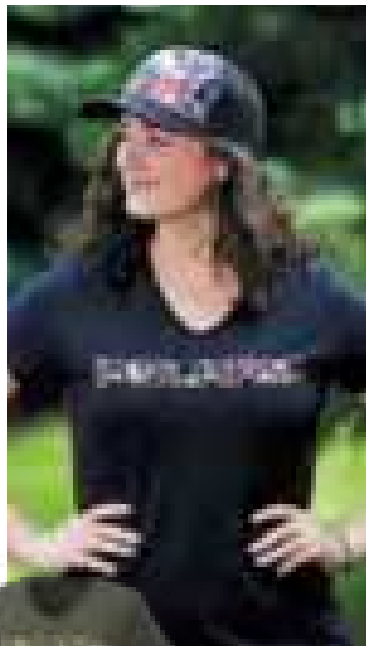


NEW
CAMO POLY HOODIE
S-3XL
BLACK | 2860718

NEW
HUNTER CAMO HOODIE
S-3XL
OLIVE | 2868716
GRAY | 2860728



NEW
MEN'S CAMO TEE
S-3XL
GRAY | 2860709
BLACK | 2860710



NEW
WOMEN'S CAMO TEE
S-3XL
BLACK | 2860836
OLIVE | 2860837



CAMO FULL ZIP
S-3XL | 2869590 |



CAMO HOODIE
S-3XL
WOMEN'S | 2867898
MEN'S | 2867879

GIFTS & BRANDED MERCHANDISE

BARWARE



POLARIS FLASK
2860812

WHISKEY ROCKS
2860813

POLARIS WOODEN
COASTERS WITH
BOTTLE OPENER
2860869

BEER FLIGHT
SAMPLER
2860814

PINT GLASS
(Set of 2)
2860815

CREDIT CARD
BOTTLE OPENER
2860818

RECREATION/GARAGE



CARD DECK
2860816

PREMIUM COOZIE
2860829

POLARIS WOOD SIGN
(26.7cm x 61cm)
2860866



POLARIS STEEL SIGN
(35.6cm x 91.4cm)
2860868



POLARIS ALUMINUM SIGN
(56cm)
2860867

TOYS



MINI SPORTSMAN TOY
2860821

DOMINATE ANY ENVIRONMENT

PRO ARMOR



WHEELS & TIRES

SEE P. 30

TIRE: HARVESTER

WHEEL: SHACKLE-MATTE BLACK

UNLESS NOTED, TRADEMARKS ARE THE PROPERTY OF POLARIS INDUSTRIES INC. 509* is a registered trademark of Teton Outfitters, LLC. Batteryminder is a registered trademark of VDC Electronics Inc. Bluetooth is a registered trademark of Bluetooth SIG, Inc. Break-Up is a registered trademark of Haas Outdoors, Inc. Browning is a registered trademark of Browning Corporation. Caliber is a registered trademark of Caliber, Inc. CREE is a registered trademark of Cree, Inc. COOLCORE is a registered trademark of Tempology LLC. Fidlock is a registered trademark of Fidlock GmbH. FOX is a registered trademark of Fox Factory Inc. Mathews is a registered trademark of Mathews Archery Inc. Maxxis is a registered trademark of Cheng Shin Rubber Ind. Co., Ltd. MB Quart is a registered trademark of Maxxsonics USA Inc. Mossy Oak is a registered trademark of Haas Outdoors, Inc. MTX is a registered trademark of Mitek Corporation. DBIO is a registered trademark of Ogio International, Inc. Rigid is a registered trademark of Rigid Hitch, Inc. Rockford Fosgate is a registered trademark of Rockford Corporation. Tiger Drylac is a registered trademark of TIGER COATINGS GMBH & CO. KG Walker Evans Racing Shocks is a registered trademark of Walker Evans Enterprises Corp. Velcro is a registered trademark of VELCRO GROUP. Yeti is a registered trademark of Yeti Coolers, LLC. YKK is a registered trademark of YKK Corporation. YouTube is a registered trademark of Google Inc. PRICES, FITMENT AND AVAILABILITY ARE SUBJECT TO CHANGE AT ANY TIME. COPYRIGHT © 2019 POLARIS INDUSTRIES INC. ALL RIGHTS RESERVED. Availability varies by market, check your local dealer for availability.

POLARIS

MY20 SPTSMN APP EMEA